

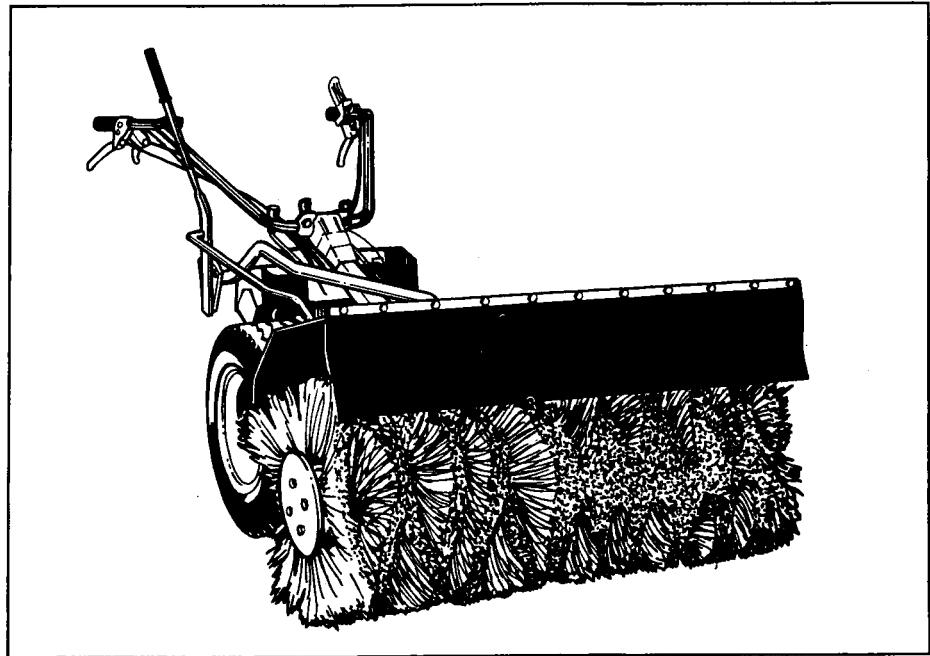


POWER SWEEPER ATTACHMENT

For Units of the 600 and 700 Series

Width 40"
 Diameter 20"
 Weight 130 lb.
 Height 23"
 Power 6hp or more req'd
 Hood steel
 Shield flexible flap
 Bristles polypropylene

All parts replaceable.
 See illustrated parts list
 on page 6.



OWNER'S MANUAL

Supplement to 600-700 Series Owner's Manual No. 901.00005.2



This symbol calls your attention to danger warnings printed in this manual or on the unit or attachment.

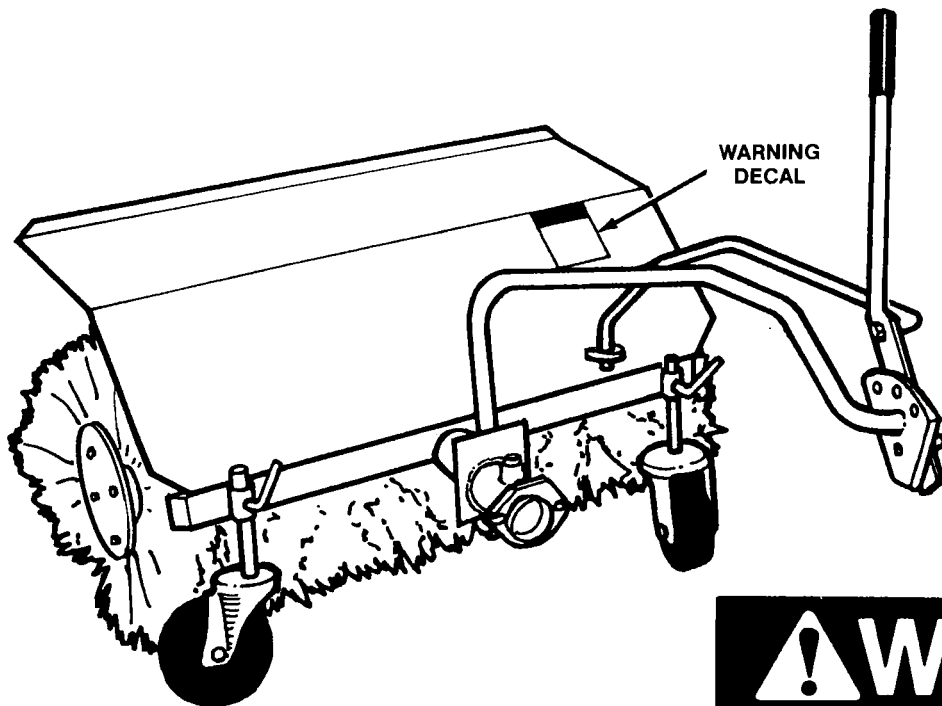


This symbol, placed over a picture or an object in it, says "NO!" Do not do, use or permit whatever is shown under the symbol.



READ BOTH THE UNIT AND THE POWER SWEEPER OWNER'S MANUALS BEFORE ATTEMPTING TO OPERATE THE SWEEPER.

PRECAUTIONS AND INSTRUCTIONS FOR USE OF THE POWER SWEEPER



THIS WARNING DECAL REPRODUCED BELOW IS SHOWN IN POSITION ON THE SWEEPER COVER

TRAINING

This Power Sweeper owner's manual is a supplement to your BCS 600-700 Series unit owner's manual. READ BOTH MANUALS before attaching and operating the Power Sweeper. BCS power units and attachments are designed for operation by properly instructed adults only. Make sure any person operating this equipment has read these manuals.

DO NOT LET CHILDREN OPERATE THE UNIT.

KEEP THE OPERATING AREA CLEAR OF PEOPLE AND ANIMALS. BE CAREFUL THAT CHILDREN DO NOT COME NEAR.

Do not put hands, feet or any other part of your body near any rotating part.

During storage, or whenever unit is unattended, make the unit unstartable by disconnecting the spark plug wire from the spark plug.

© 1990, BCS America Inc.

! WARNING



Read the Operator's Manual & Safety Guide. Obtain replacement manual from your dealer or contact BCS Mosa, Inc., P.O. Box 1739, Matthews, N.C. 28105

- Know location and functions of all controls.
- Keep all safety devices and shields in place & operating.
- Never allow children or uninstructed adults to operate.
- Stop engine before unclogging or making repairs.
- Keep bystanders and pets away from machine.
- Keep away from rotating parts.
- Removal of one attachment may create a hazard associated with another, if directions are not followed.
- Deactivate PTO lockout for front operating attachments. See illustration.



PREPARATION

Wear safety protection articles and clothing suitable for the climate and the work:

1. Wear eye protection goggles stamped "Z87" (for ANSI Standard Z87). In bright sunlight, wear sunglasses under the goggles.
2. Wear hearing protection.
3. Wear a dust mask.
4. Protect sensitive skin areas from the sun with clothing or a sun block.

Obey all instructions for the safe handling and storage of gasoline fuel. (See your unit owner's manual.)

Before and during transport of the unit, the casters of the Sweeper should be adjusted so the bristles do not touch the ground.

If you have a 700 series unit, deactivate the PTO

reverse lockout for operation with this front drive Sweeper. A drawing of the lockout is on the Sweeper decal. See your unit owner's manual for instructions.

Before starting the engine, put all control levers in the neutral "N" position. All "N" positions are neutral. Always be sure the PTO (power take-off) to the Power Sweeper is disengaged.

OPERATION

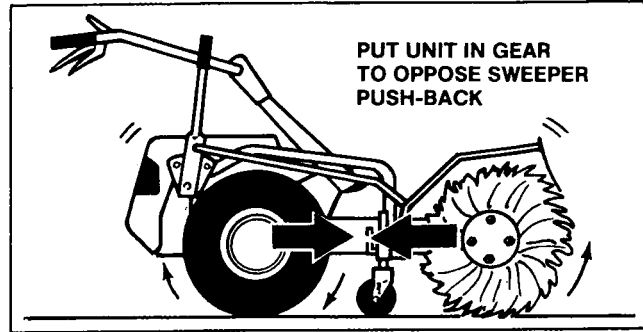
Carefully inspect the area to be power-brushed for objects which could be thrown by the Sweeper or cause it to run off course. Remove wires, glass objects, doormats, boards, toys and other obstructions.

Move the unit to the work area and shut off the engine. Adjust casters for proper brush height: brush should touch flat, paved surfaces; should barely clear the turf when removing lawn thatch. If brush is adjusted too low, or the Sweeper is driven into sudden ground rises, the brush will drive the unit back towards the operator.

Always put the unit in gear before engaging the PTO. If the unit is in neutral and the Sweeper is engaged and in ground contact, it will drive back the unit.

When the surface is irregular or contains hillocks, prepare to let go of the controls to stop all motion if the unit is driven backwards.

Use extreme caution when operating the Sweeper on paved or gravelly areas. Be careful that the discharge is not directed at people or passing vehicles.



Do not use the Sweeper on any terrain where you cannot keep your footing, or the unit could overturn or slide into you. Walk behind the unit on slopes. Disengage PTO when going up or down a slope. Work across the slope when sweeping.

If rooftops are to be swept, be sure the surface is dry and does not pitch more than 5 degrees (1/2" per foot). Set up barriers that will warn you when you come near the edges.

Select the slowest gear and throttle speeds when backing the unit.

MAINTENANCE AND STORAGE

DISCONNECT THE SPARK PLUG WIRE FROM THE SPARK PLUG TO ENSURE THAT ENGINE CANNOT BE STARTED DURING ANY OF THESE THINGS:

1. During repair or adjustment of the unit or Sweeper.
2. When unit is to be stored, transported, shipped, or left unattended.
3. If the machine suddenly starts to vibrate or run erratically. If unit and Sweeper are not running smoothly, they should be inspected by an authorized BCS servicing dealer or distributor before further use.

All safety shields, plates, lockouts, deflectors must be in proper position. Safety warning decals on both Sweeper and unit should be replaced if worn out or

defaced. Do not operate if any safety devices or parts are missing or broken.

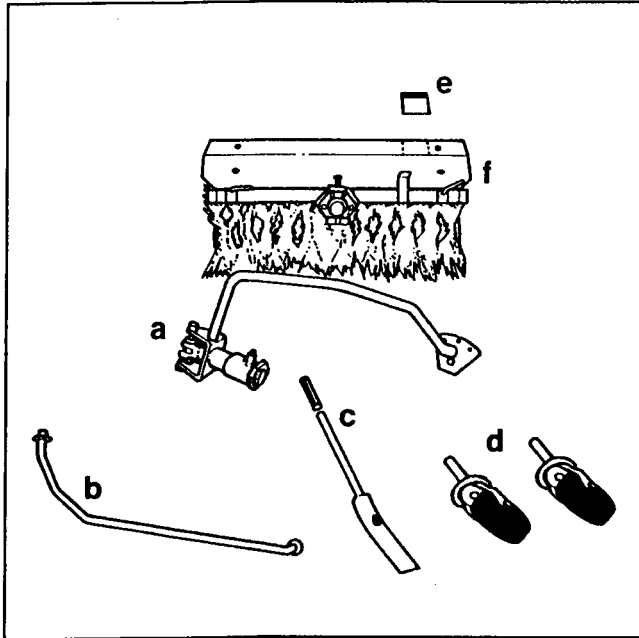
Keep engine, unit and Sweeper in good working condition. Clean the Sweeper at regular intervals, and check each time for missing parts. Tighten loose fasteners.

Clean the air filter often. Under very dusty conditions, install a commercial air filter, or a precleaner over a "dry" type filter, and clean several times daily.

Perform the maintenance given in the unit and Power Sweeper owner's manuals, but do not make repairs for which instructions are not given in the manuals. Certain engine adjustments and internal servicing of engine, unit transmission and Sweeper should be done only by BCS-trained servicemen at an authorized BCS servicing dealer or distributor.

UNCRATING AND ASSEMBLING

1. Wear eye protection and gloves when breaking the steel bands and removing staples from the carton.



2. Open the carton, then slit the corners and lay down the sides. Remove these pieces (see drawing):
 - a) U-joint assembly (includes a "qwik hitch" to the unit PTO, and a Sweeper angle adjustment plate).
 - b) Long angle control bar with "qwik pins" and flat washers at the end holes.
 - c) Angle adjustment lever and rubber grip.
 - d) Two caster wheels (for brush height adjustment).
 - e) Power Sweeper instruction decal.
 - f) Sweeper (main assembly).

NOTE

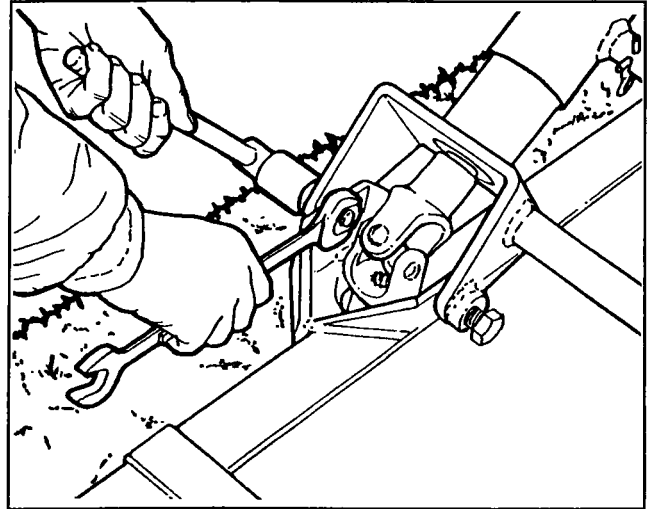
Some parts have the fasteners placed in them. These are to be removed and installed per instructions as you proceed with assembly.

3. Lay the Sweeper down with its PTO shaft connection pointing straight up. Remove the nuts and bolts from the bracket at the connector. Grease the PTO shaft and the inside of the connector freely with clean bearing grease.

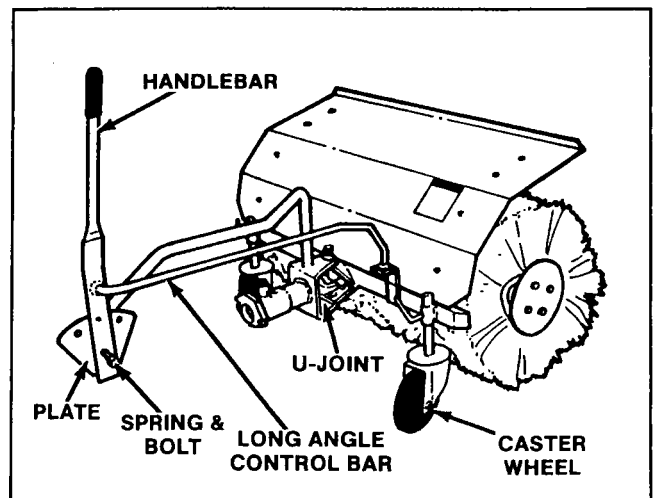
NOTE

Keep a rubber mallet on hand for use in step 4, because the fit may be very tight.

4. Fit the PTO connector in the U-joint to the Sweeper shaft connector. Tap the mounting brackets together to align the bolt holes. Install the two M16 x 40 bolts in the holes, and put a lock nut on each bolt. Make these fasteners snug but not tight, because the U-joint must be able to pivot (for Sweeper angle adjustment).

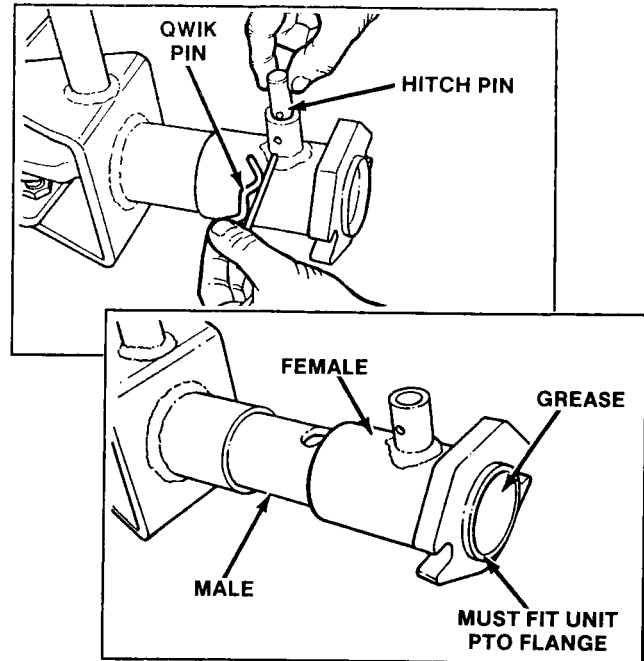


5. Fit the caster wheels into the mounting brackets on the Sweeper. Lock them in place by tightening the set screws. (Height adjustment will be made later.)



6. Remove the tension spring and bolt from the Sweeper angle adjusting plate (on U-joint assembly). Push the stud of the angle adjusting lever into the one of the three top holes in the plate. Put the spring onto the bolt, and install the bolt through the lever into the bottom hole of the plate. Put the rubber grip on the lever.

7. Remove the "qwik pins" and flat washers from both ends of the angle control rod. Mount one end to the Sweeper cover bracket, and the other end to the angle adjusting lever.
8. Pull the "qwik pin" and hitch pin from the "qwik hitch" on the U-joint shaft. Slide the hitch off the shaft. Grease the shaft and all inner surfaces of the hitch. Connect the female end of the hitch to the unit PTO flange (make sure of proper fit). Slide the hitch back onto the male U-joint shaft. Line up the holes in the hitch, and secure with the hitch pin and "qwik pin."
9. Tear the backing from the instruction decal and fix the decal to the brush cover as shown in the drawing on page 4.



POWER SWEEPING

The Sweeper can be used to sweep walks and drives of debris or newly fallen snow. It can also be used to pull thatch out of lawns. The working height (ground clearance) is dictated by the work application and the surface to be swept. The angle can be adjusted to sweep left, straight ahead, or to the right.

⚠ WARNING

The Sweeper will push the unit backward if set too low (less than zero clearance) especially when operating while the unit drive is in neutral gear. Striking an obstruction or running into a sudden incline can also cause the Sweeper to back up the unit. This can result in loss of operator control. Inspect the area for obstructions before sweeping. Do not use the Sweeper on extremely uneven surfaces.

1. **SETTING BRUSH HEIGHT:** Loosen the caster wheel set screws. Set required height and tighten the screws. The bristles should be allowed to contact smoothly paved surfaces, but should be raised for clearance of bumpy or irregular terrain.
2. **SETTING THE ANGLE:** Use whatever angle gives the best results. Set the angle adjusting handle in the forward hole to sweep left, the rear hole to sweep right, and the one between to sweep straight ahead.

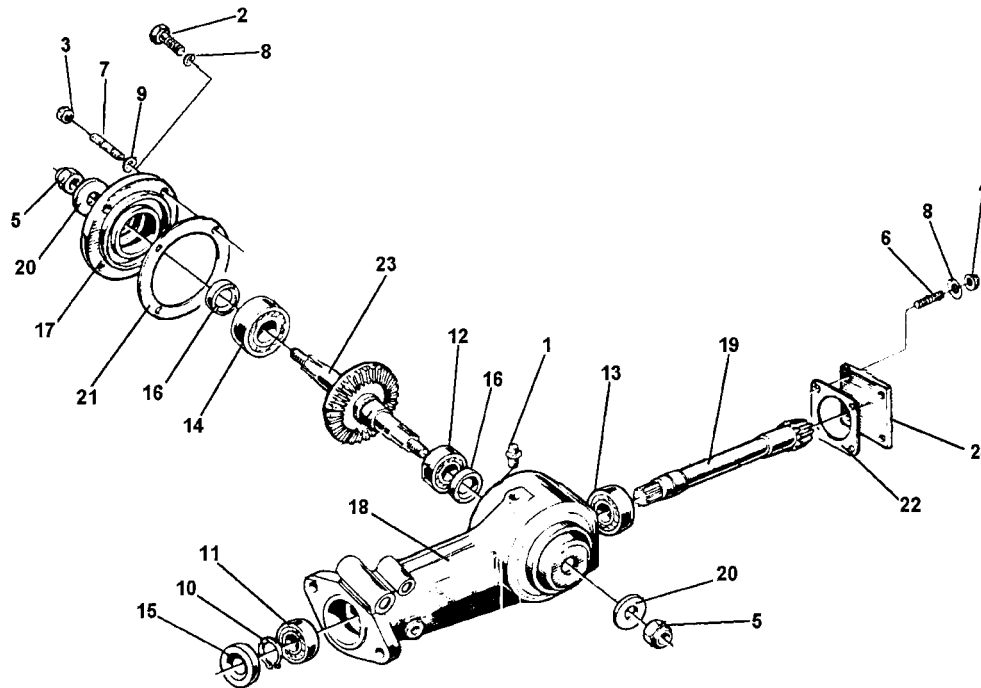
⚠ WARNING

Do not sweep on steep grades or slippery slopes or wherever else you may not be able to keep control.

3. **SELECTING GEAR AND SWEEPER SPEEDS:** The throttle speed through the PTO determines the Sweeper rpm. How fast the unit moves is according to both the throttle setting and chosen gear. Try these settings:
 - a) Medium throttle and gear for sweeping walks and driveways.
 - b) Lowest possible forward speed and Sweeper rpm for removing thatch without tearing up the lawn.
 - c) High gear and lots of throttle for pushing snow, especially wet snow.
4. **SEQUENCE FOR START-UP:** Always be sure the unit is out of gear (in "N" neutral position) and the PTO is disengaged before you crank the engine. After the engine starts, put the unit into gear before engaging the PTO. This sequence is necessary because the forward thrust of the unit will help counteract any backward force exerted by the Sweeper.

⚠ DANGER

The weight of the unit plus the Sweeper is 275 lbs. Do not drive the unit onto skating ponds or lakes unless the ice is thick and strong enough to amply support the equipment and the operator.



ID	PART NO	DESCRIPTION	DENOMINACION	NOTES
1	300.40001	PLUG 1/4	TAPON 1/4	
2	311.12151	SCREW M8 X 25	TORNILLO M8 X 25	
3	312.41080	NUT, SELF LOCKING M8	TUERCA AUTOBLOC. M8	
4	312.41085	NUT	TUERCA	
5	312.41141	NUT, SELF LOCKING M14 STANDARD	TUERCA AUTOBLOC. M14 NORMAL	
6	313.12078	SUTD M8 X 32 X 14 X 14	PRISIONERO M8 X 32 X 14 X 14	
7	313.12081	STUD M8 X 38 X 14 X 14	PRISIONERO M8 X 38 X 14 X 14	
8	314.21083	SUPER WASHER 8 DIN	SUPER ARANDELA 8 DIN	
9	314.23084	WASHER, LOCK M8.4	ARANDELA DE RES. M8.4	
10	351.21020	CIRCLIP EXTERN. D 20	SEEGER EXT. D 20	
11	371.11200	BEARING 20 X42 X 12 6004	COJINETE 20 X 42 X 12 6004	
12	371.11255	BEARING 25 X 52 X 15 6205	COJINETE 25 X 52 X 15 6205	
13	371.41201	BEARING 20 X 47 X 14 7204 B	COJINETE 20 X 47 X 14 7204 B	
14	371.41250	BEARING	COJINETE	
15	382.12003	OIL SEAL 20 X 42 X 7 STANDARD	CHAPA RET. AC. 20 X 42 X 7 NORM.	
16	382.12503	OIL SEAL	CHAPA RET. ACEITE	
17	511.48428	COUPLING	ACOPLAMIENTO	
18	512.48405	ROTARY HOE CENTRAL ASSEMBLY	CUERPO CENTRAL FRESADORA	
19	524.48411	PINION SHAFT, EXTENDED	PINION CONICO	
20	561.48438	WASHER	ARANDELA	
21	580.43407	GASKET	GUARNICION	
22	580.49859	ROTARY HOE GASKET	GUARNICION FRESADORA	
23	590.48408	SHAFT WITH GEAR	ARBOL CON CORONA	
24	561.49858	REAR COVER FOR ROTARY HOE	TAPA POSTERIOR FRESADORA	

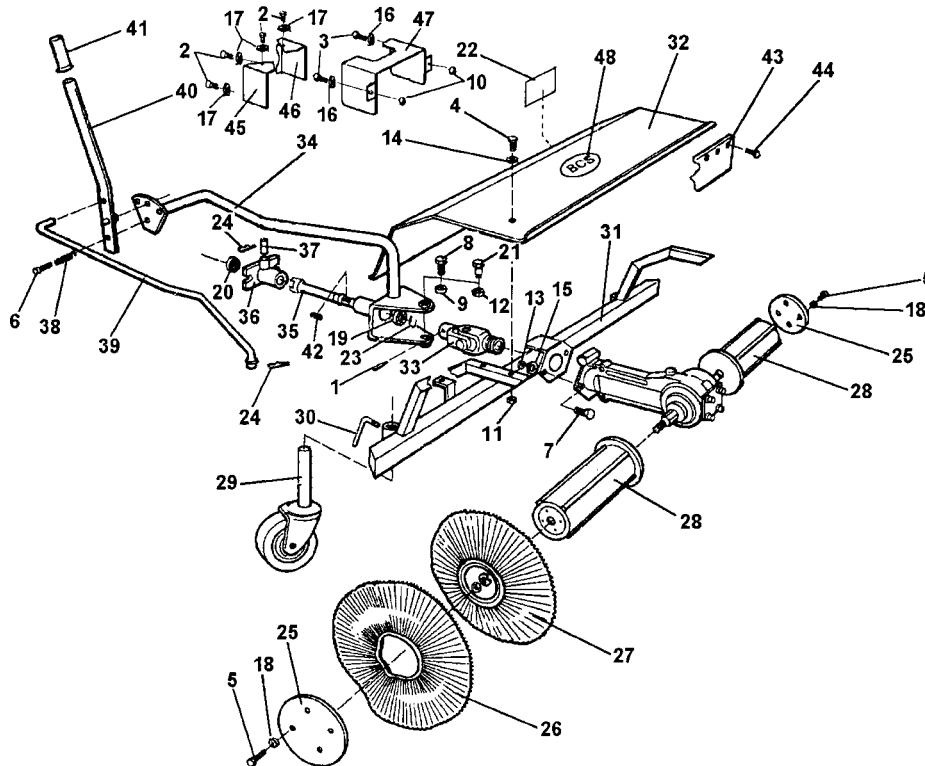
Attachments Sweepers

New 3 Dog PTO Sweeper

Serial Number Range
10000 - -----

01.01

REVISED 12/03/02



ID	PARTNO	DESCRIPTION	DENOMINACION	NOTES
1	311.00360	SCREW, M10X10	TORNILLO M10X10	
2	311.11090	SCREW, TE M6X10	TORNILLO TE M6X10	
3	311.11097	SCREW, TE M6X45	TORNILLO TE M6X45	
4	311.12092	SCREW, M6X35	TORNILLO M6X35	
5	311.12211	SCREW M10X30	TORNILLO M10X30	
6	311.12215	SCREW M10X60	TORNILLO M10X60	
7	311.12272	SCREW, M12X30	TORNILLO M12X30	
8	311.12438	SCREW, M16X40 - FOR OLDER SWEEPERS	TORNILLO M16X40	
9	312.31160	NUT, M16 - FOR OLDER SWEEPERS	TUERCA M16	
10	312.41060	NUT, SELF LOCKING M6	TUERCA M8	
11	312.41080	NUT, M8	TUERCA M8	
12	312.41100	NUT, M10 - NEWER SWEEPERS	TUERCA M10	
13	312.41120	NUT, M12	TUERCA M12	
14	314.11064	WASHER, FLAT M6.4	ARANDELA PLANA M6.4	
15	314.11130	WASHER, FLAT M13	ARANDELA PLANA M13	
16	314.11170	WASHER FLAT M17	ARANDELA PLANA M17	
17	314.13064	WASHER, FLAT 6.4	ARANDELA PLANA 6.4	
18	314.23105	WASHER, LOCK 10.5	ARANDELA ESP.DE RES. M10.5	
19	371.12249	BEARING, M25X52X15	CONJINETE M25X52X15	
20	371.12252	BEARING, M25X47X12	CONJINETE M25X47X12	
21	561.48440	SHOLDER SCREW - NEWER SWEEPERS	TORNILLO SPECIAL	
22	580.47975	"READ OWNERS MANUAL" DECAL	"READ OWNERS MANUAL" AUTOADHESIVA	
23	581.27434	CIRCLIP, EXTERNAL	SEGER, EXT.	
24	581.27489	HAIR PIN	PASADOR	
25	581.90452	DISC	DISCO	
26	581.90453	BRUSH, WAVE	CEPILLO	
27	***.*****	BRUSH, CONCAVE	CEPILLO	27- NOTE BRUSHES HAVE
28	581.90457	DRUM	BARRIL	CHANGED, THE INSIDE 2 BRUSHES
29	581.90459	CASTER WHEEL	RUEDA	ARE A 581.90462 (21" BRUSH) AND
30	581.90460	ADJUSTING SCREW	TORNILLO	THE OUTSIDE 2 BRUSHES ARE A
31	581.90461	FRAME, SUPPORT	ESTRUCTURA SOPORTE	581.90454 (19.5" BRUSH)
32	581.90464	HOOD	PROTECCION	
33	581.90468	"U" JOINT	"U" MANGUETA	
34	581.90469	BRACE WITH ANGLE PLATE	BRAZO	
35	581.90471	PTO SHAFT	PARTE	

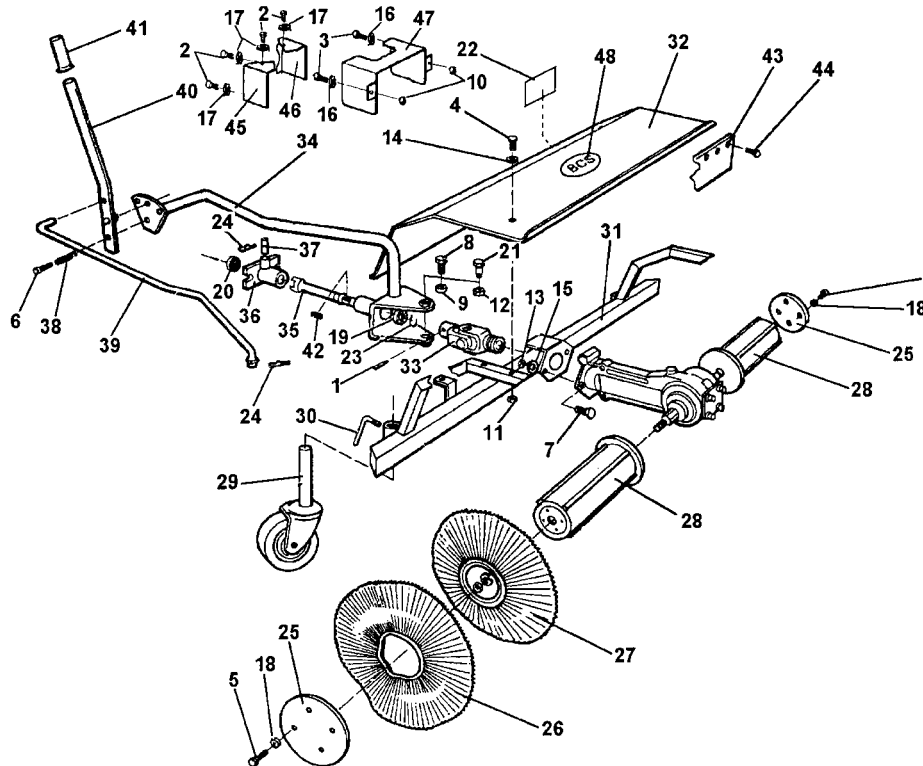
Attachments Sweepers

New 3 Dog PTO Sweeper

Serial Number Range 10000 - -----

01.01

REVISED02/01/02



ID	PARTNO	DESCRIPTION	DENOMINACION	NOTES
36	581.90473	HITCH	SOPORTS	
37	581.90475	PIN, HITCH	PASADOR	
38	581.90477	SPRING	MUELLE	
39	581.90478	BAR, ANGLE ADJUSTER	BRAZO	
40	581.90479	LEVER, ANGLE ADJUSTER	PLANCA	
41	581.90480	GRIP, RUBBER	BOTON	
42	581.90482	KEY	LINGUETA PARA	
43	581.90486	FLAP	PROTECCION DELANTERA	
44	581.90487	PIN, FLAP	PASADOR	
45	599.90762	GUARD, RH	PROTECCION, RH	
46	599.90763	GUARD, LH	PROTECCION, LH	
47	599.90764	GUARD, TOP	PROTECCION	
48	900.00002	"BCS" DECAL	"BCS" AUTOADHESIVA	