



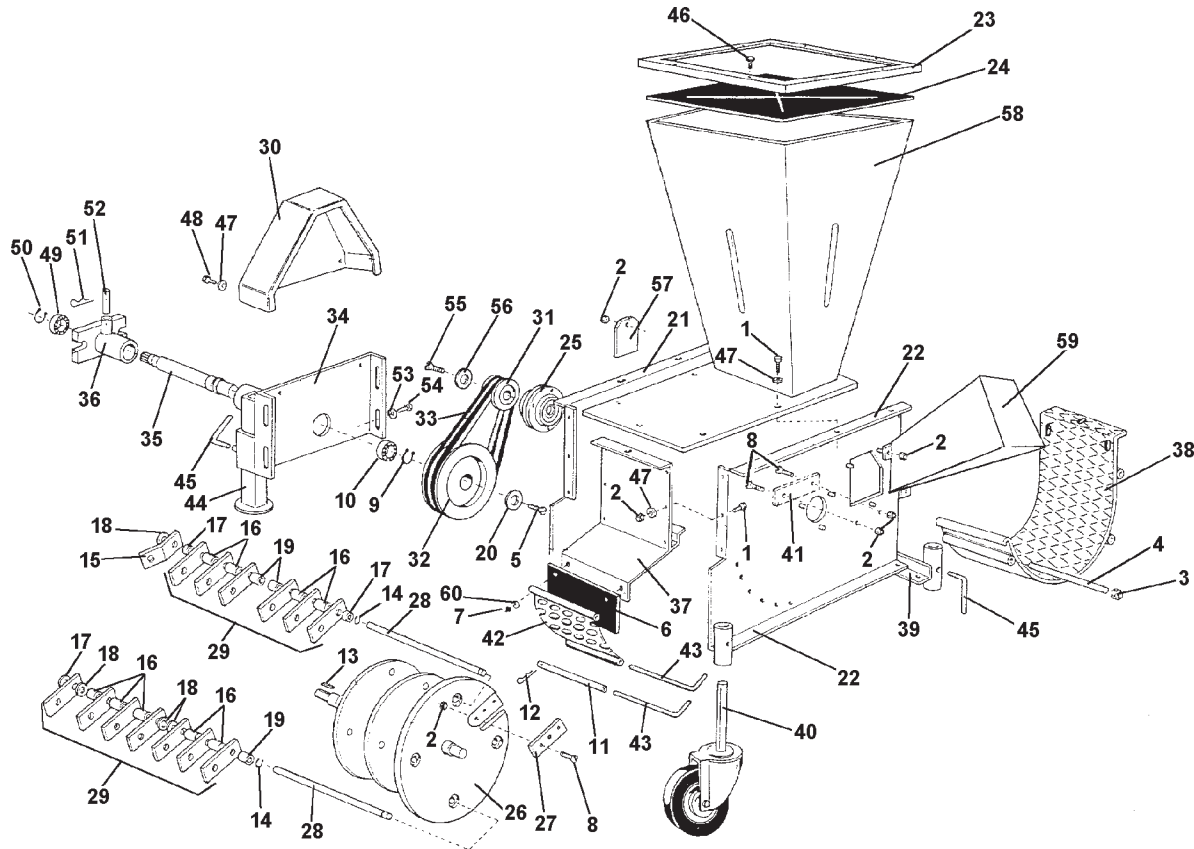
A M E R I C A

Chipper Shredder

Bio 100 Attachment Square Hoppers

Serial Number Range All Attach, Square Hoppers

01.00



ID	PART NO	QTY	DESCRIPTION	ID	PART NO	QTY	DESCRIPTION
1	311.12150		SCREW, M8X20	31	581.27464		PULLEY **
2	312.41080		NUT, SELF LOCKING, M8	32	581.27465		PULLEY **
3	581.27427		NUT, M12	33	581.27466		BELT
4	581.27428		ROD	34	581.27467		REAR SUPPORT **
5	581.27430		SCREW, M8X20	35	581.27468		DRIVE SHAFT FOR SPLINE DRIVE
6	581.27431		SHIELD **	36	581.27469		SUPPORT **
7	581.27432		RIVET, 4.9X16	37	581.27470		DEFLECTOR, DISCHARGE **
8	581.27433		COUNTER SUNK BOLT, M8X25	38	581.27471		PANEL, BOTTOM **
9	581.27434		CIRCLIP	39	581.27472		SUPPORT
10	581.27435		BEARING	40	581.27473		WHEEL ASSEMBLY
11	581.27436		SLEEVE	41	581.27474		BLADE STATIONARY **
12	581.27437		COTTER PIN	42	581.27475		SCREEN **
13	581.27438		KEY	43	581.27476		ROD **
14	581.27439		CIRCLIP	44	581.27477		STAND **
15	581.27440		L BLADE **	45	581.27478		ADJUSTING SCREW **
16	581.27441		SPACER **	46	581.27479		SCREW, M6.3X19
17	581.27442		SPACER	47	581.27484		WASHER
18	581.27443		SPACER	48	581.27485		SCREW M8X16
19	581.27444		SPACER	49	581.27487		BEARING
20	581.27447		WASHER **	50	581.27488		CIRCLIP
21	581.27452		PANEL	51	581.27489		COTTER PIN
22	581.27453		RIGHT SIDE WALL	52	581.27490		PIN **
23	581.27454		DEFLECTOR SUPPORT **	53	581.27491		WASHER
24	581.27455		HOPPER FLAP **	54	581.27492		SCREW M10X25
25	581.27458		SUPPORT & BEARING **	55	581.27493		SCREW M10X30
26	581.27459		DRUM **	56	581.27494		WASHER
27	581.27460		BLADE **	57	581.27496		PLATE
28	581.27461		SHAFT HAMMER W/SNAP RING **	58	581.58252		HOPPER
29	581.27462		KNIVES **	59	581.27451		CHIPPER CHUTE, SQUARE
30	581.27463		BELT COVER **	60	581.58270		WASHER
				61	581.90471		DRIVE SHAFT FOR 3 DOG DRIVE

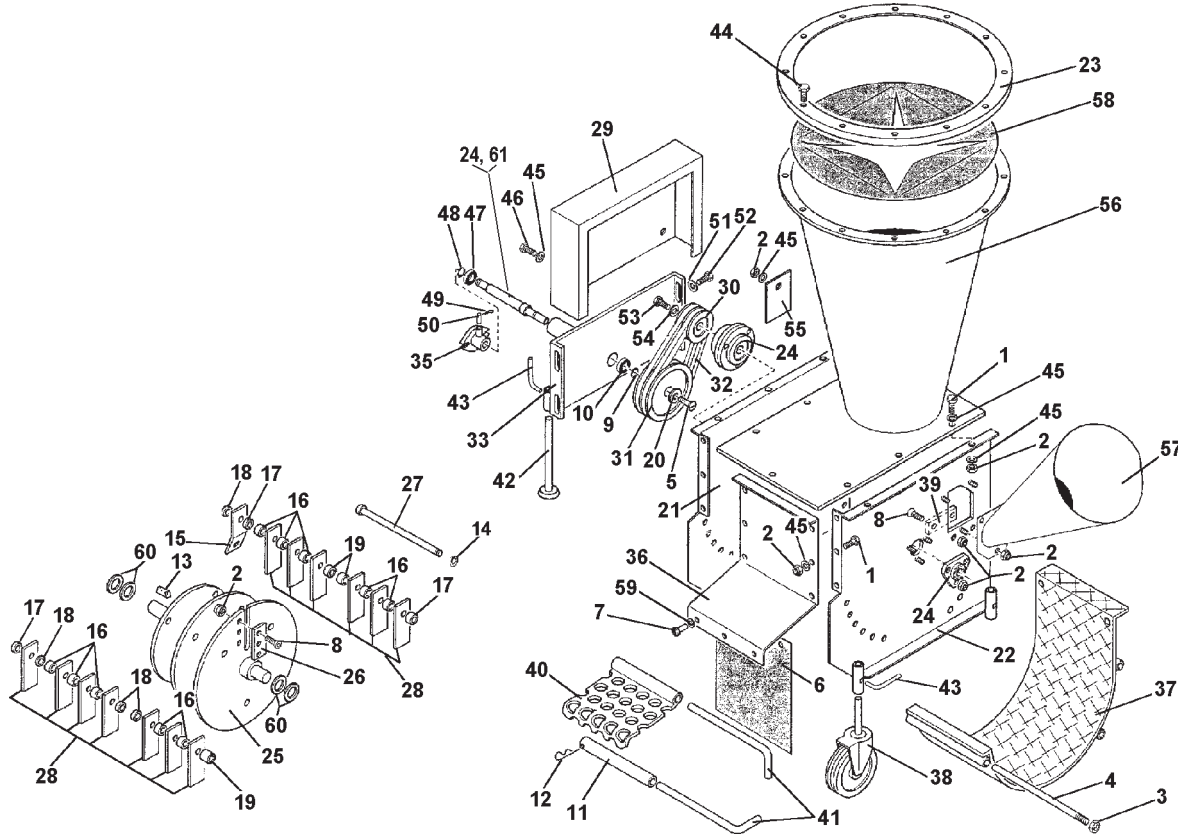
**= THESE PARTS ARE INTERCHANGEABLE WITH THE GENERATION II UNITS

**Chipper
Shredder**

**Bio 100 Attachment
Round Hoppers**

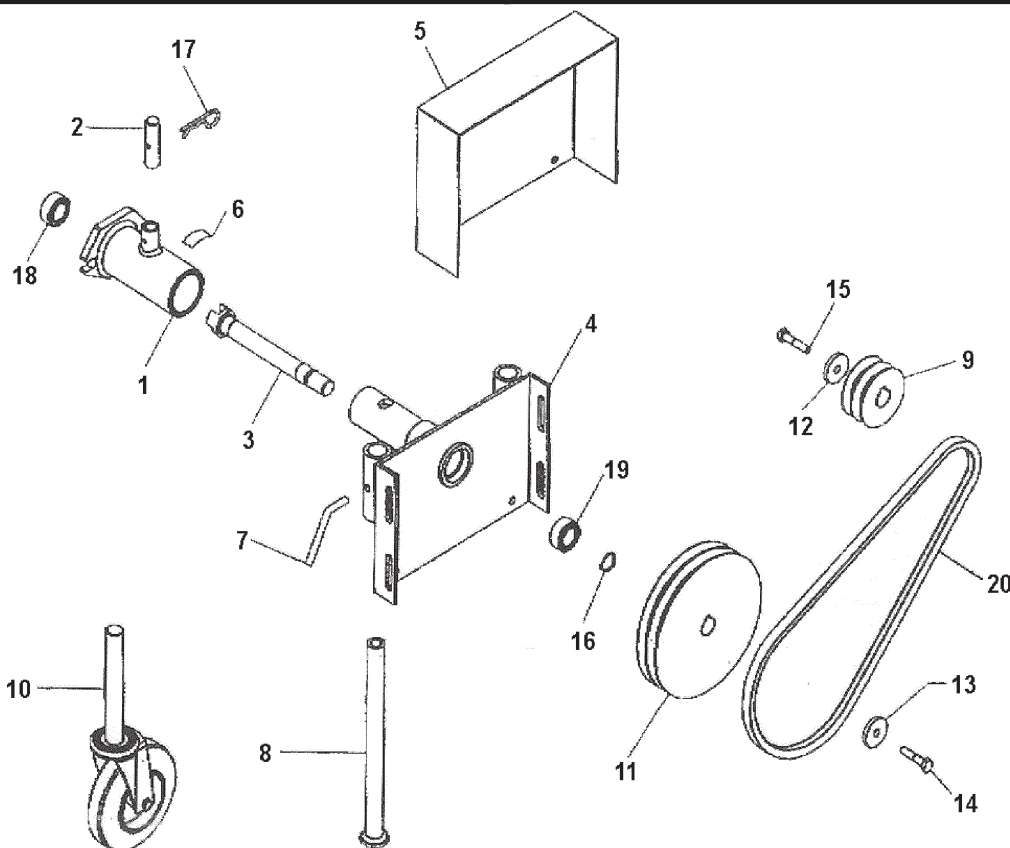
**Serial Number Range
All Attach, Round Hoppers**

02.00

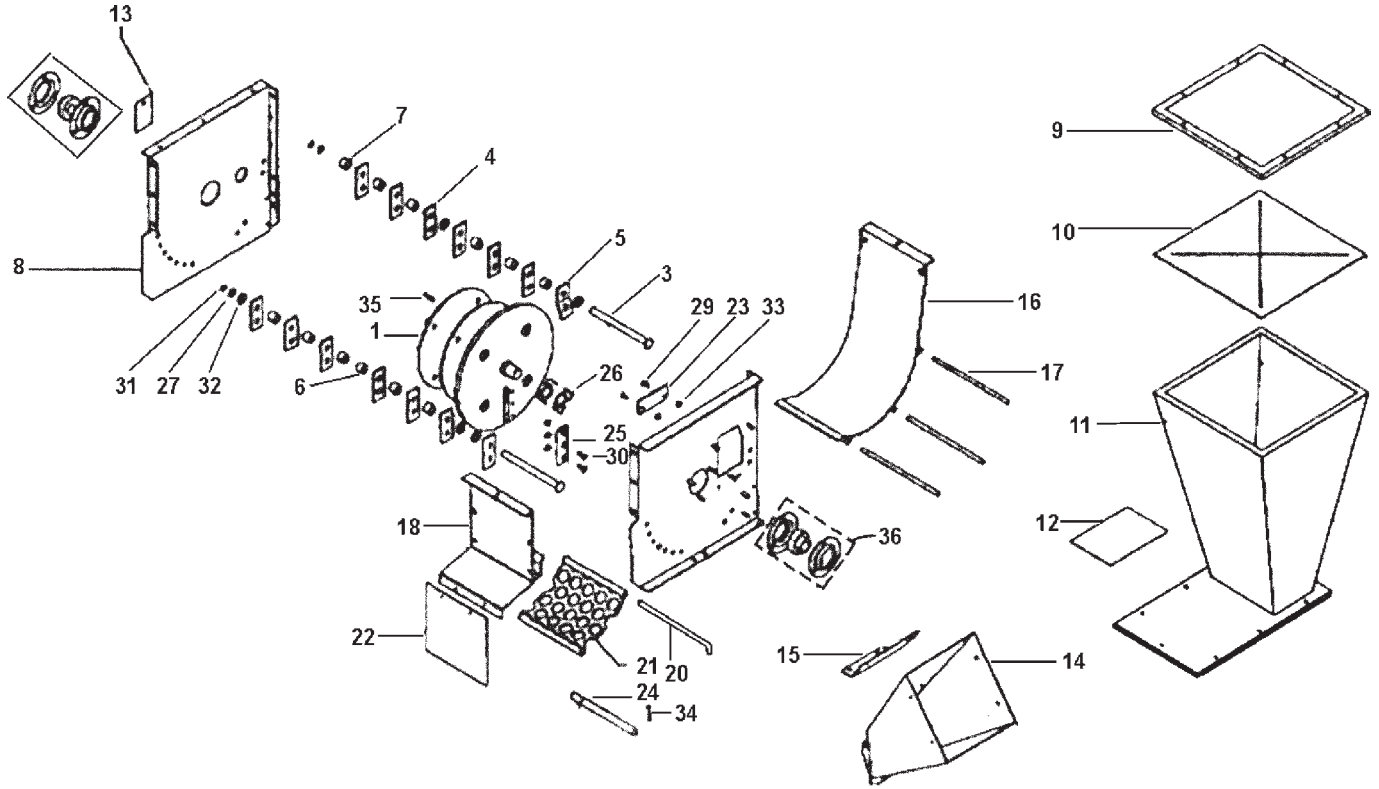


**= THESE PARTS ARE INTERCHANGEABLE WITH THE GENERATION II UNITS

ID	PART NO	QTY	DESCRIPTION	ID	PART NO	QTY	DESCRIPTION
1	311.12150		SCREW, M8X20	31	581.27465		PULLEY **
2	312.41080		NUT, SELF LOCKING, M8	32	581.27466		BELT
3	581.27427		NUT, M12	33	581.27467		REAR SUPPORT **
4	581.27428		ROD	34	581.27468		DRIVE SHAFT FOR SPLINE DRIVE
5	581.27430		SCREW, M8X20	35	581.27469		SUPPORT **
6	581.27431		SHIELD **	36	581.27470		DEFLECTOR, DISCHARGE **
7	581.27432		RIVET, 4.9X16	37	581.27471		PANEL, BOTTOM **
8	581.27433		COUNTER SUNK BOLT, M8	38	581.27473		WHEEL ASSEMBLY
9	581.27434		CIRCLIP	39	581.27474		BLADE STATIONARY**
10	581.27435		BEARING	40	581.27475		SCREEN **
11	581.27436		SLEEVE	41	581.27476		ROD **
12	581.27437		COTTER PIN	42	581.27477		STAND **
13	581.27438		KEY	43	581.27478		ADJUSTING SCREW **
14	581.27439		CIRCLIP	44	581.27479		SCREW, M6.3X19
15	581.27440		L BLADE **	45	581.27484		WASHER
16	581.27441		SPACER **	46	581.27485		SCREW M8X16
17	581.27442		SPACER	47	581.27487		BEARING
18	581.27443		SPACER	48	581.27488		CIRCLIP
19	581.27444		SPACER	49	581.27489		COTTER PIN
20	581.27447		WASHER **	50	581.27490		PIN **
21	581.27452		PANEL	51	581.27491		WASHER
22	581.27453		RIGHT SIDE WALL	52	581.27492		SCREW M10X25
23	581.27454R		DEFLECTOR SUPPORT	53	581.27493		SCREW M10X30
24	581.58258		SUPPORT & BEARING **	54	581.27494		WASHER
25	581.27459		DRUM **	55	581.27496		PLATE
26	581.27460		BLADE **	56	581.58252		HOPPER
27	581.27461		SHAFT HAMMER W/SNAP RING **	57	581.58257		CHIPPER CHUTE
28	581.27462		KNIVES **	58	581.58260R		HOPPER FLAP
29	581.27463		BELT COVER **	59	581.58270		WASHER
30	581.27464		PULLEY **	60	581.58277		SHIM
				61	581.90471		DRIVE SHAFT FOR 3 DOG DRIVE



ID	PART NO	QTY	DESCRIPTION	ID	PART NO	QTY	DESCRIPTION
1	010201000	1	PTO ADAPTER FLANGE	11	013100000	1	PULLEY
2	010202000	1	PIN	12	013500000	1	WASHER
3	010203030	1	PTO DRIVE SHAFT 3 DOG	13	013600000	1	WASHER
4	010204000	1	ADAPTER PLATE	14	500010010	1	BOLT
5	010700000	1	SHEILD	15	500012008	1	BOLT
6	010900000	1	DECAL	16	510011000	1	SNAPRING
7	011000000	4	LOCKING HANDLE	17	530001000	1	LYNCHPIN
8	011100000	2	STABILZER LEG	18	540001000	1	BEARING
9	011200000	1	PULLEY	19	540002000	1	BEARING
10	012600000	2	CASTER WHEEL ASSEMBLY	20	620002034	2	BELT



ID	PART NO	QTY	DESCRIPTION	ID	PART NO	QTY	DESCRIPTION
1	010101000	1	ROTOR	21	012800000	1	SCREEN
NI	010101001	1	ROTOR COMPLETE	22	012900000	1	SHEILD
3	010102000	4	SHAFT, HAMMER	23	013000000	1	BLADE, STATIONARY
4	010103000	26	HAMMER, STRAIGHT	24	013200000	5	SLEEVE
5	010104000	2	HAMMER, L-SHAPED	25	013300000	1	BLADE
6	010105000	16	SPACER	26	021100002		
7	010108001	12	SPACER	27	080009016	4	SHIM
8	010141000	1	PANEL	NI	205000000	1	
9	010300000	1	DEFLECTOR SUPPORT	29	500011008	2	BOLT
10	010302000	1	HOPPER FLAP	30	500012008	3	BOLT
11	010304000	1	HOPPER	31	510012000	4	CIRCLIP
12	010610000	1	DECAL	32	511120020	10	WASHER
13	011300000	1		33	520002008	3+2	NUT
14	011800050	1	CHIPPER CHUTE	34	530003000	5	COTTER PIN
15	011800051	1	SUPPORT PLATE, CHUTE	35	530004000	1	KEY
16	012000000	1	PANEL, BOTTOM	36	550002030	2	BEARING ASSEMBLY
17	012100000	3	SLEEVE				
18	012200000	1	DISCHARGE DEFLECTOR				
19	012500001	1	PANEL				
20	012700000	5	ROD				