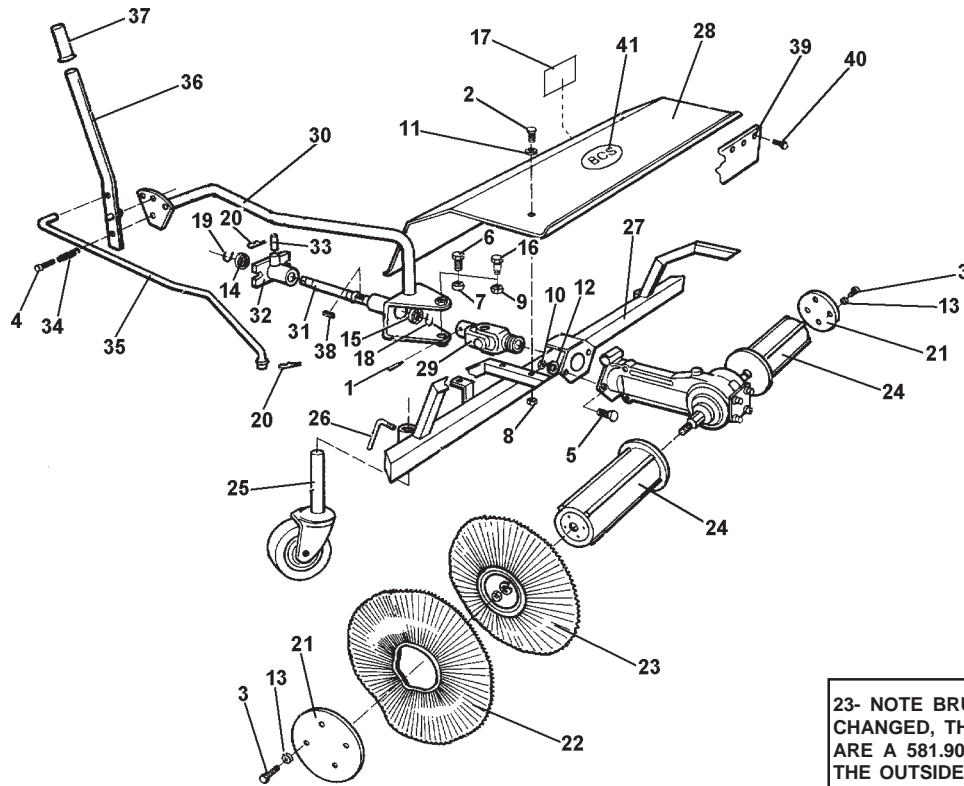




A M E R I C A



23- NOTE BRUSHES HAVE CHANGED, THE INSIDE 2 BRUSHES ARE A 581.90462 (21" BRUSH) AND THE OUTSIDE 2 BRUSHES ARE A 581.90454 (19.5" BRUSH)

ID	PART NO	DESCRIPTION	ID	PART NO	DESCRIPTION
1	311.00360	SCREW M10 X 10	26	581.90460	ADJUSTING SCREW
2	311.12092	SCREW M6 X 35	27	581.90461	FRAME, SUPPORT
3	311.12211	SCREW M10 X 30	28	581.90464	HOOD
4	311.12215	SCREW M10 X 60	29	581.90468	U" JOINT
5	311.12272	SCREW M12 X 30	30	581.90469	BRACE WITH ANGLE PLATE
6	311.12438	SCREW M16 X 40	31	581.27468	PTO SHAFT
7	312.31160	NUT M16 - OLDER SWEEPERS	32	581.90473	HITCH
8	312.41080	NUT M8	33	581.90475	PIN, HITCH
9	312.41100	NUT, M10 - NEW SWEEPERS	34	581.90477	SPRING
10	312.41120	NUT, M12	35	581.90478	BAR, ANGLE ADJUSTER
11	314.11064	WASHER, FLAT M6.4	36	581.90479	LEVER, ANGLE ADJUSTER
12	314.11130	WASHER, FLAT M13	37	581.90480	GRIP, RUBBER
13	314.23105	WASHER, LOCK 10.5	38	581.90482	KEY
14	371.12199	BEARING M20 X 47 X 14	39	581.90484	FLAP
15	371.12249	BEARING M25 X 52 X 15	40	581.90485	PIN, FLAP
16	561.48440	SHOULDER BOLT-NEW SWEEPERS	41	900.00002	BCS" DECAL
17	580.47975	READ OWNERS MANUAL" DECAL			
18	581.27434	CIRCLIP, EXTERNAL			
19	581.27488	CIRCLIP, EXTERNAL			
20	581.27489	HAIR PIN			
21	581.90452	DISC			
22	581.90453	BRUSH, WAVE			
23	*** *****	BRUSH, CONCAVE			
24	581.90457	DRUM			
25	581.90459	CASTER WHEEL			

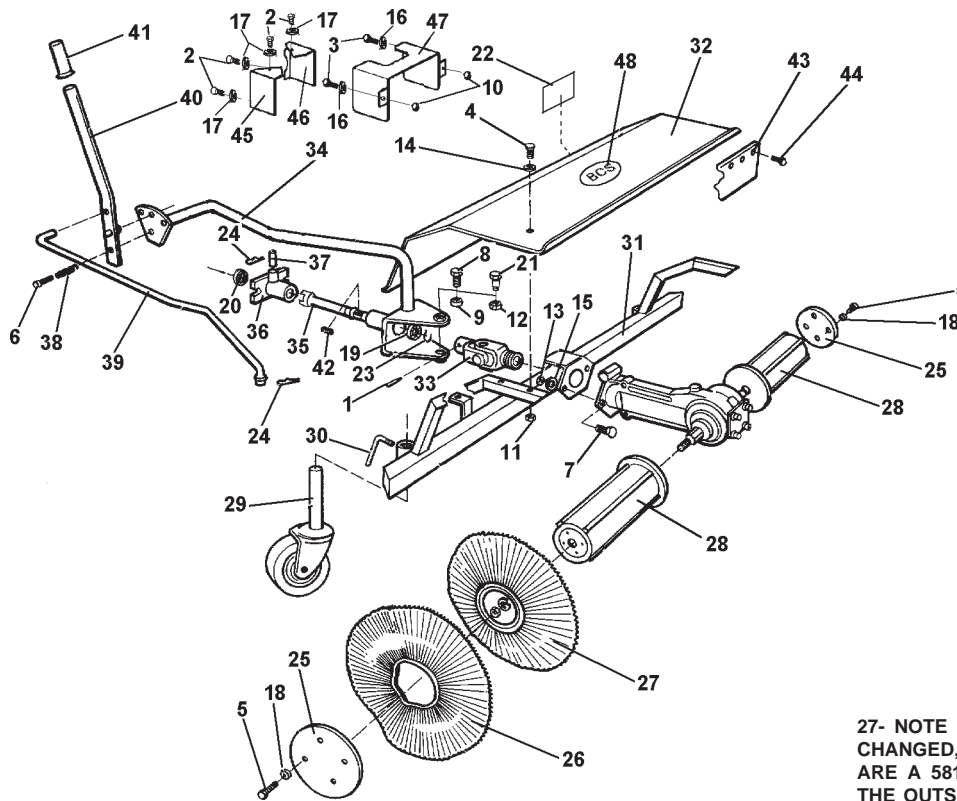
Attachment Sweeper

New 3 Dog PTO Sweeper

Serial Number Range 10000 - 127175

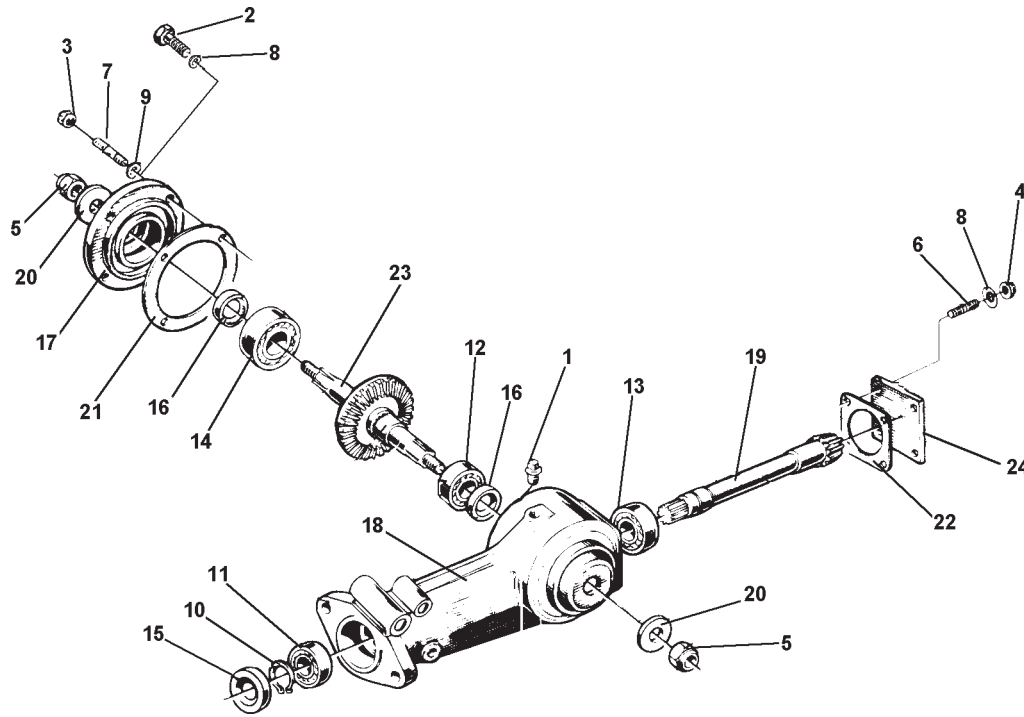
01.00

REVISED 05/28/10

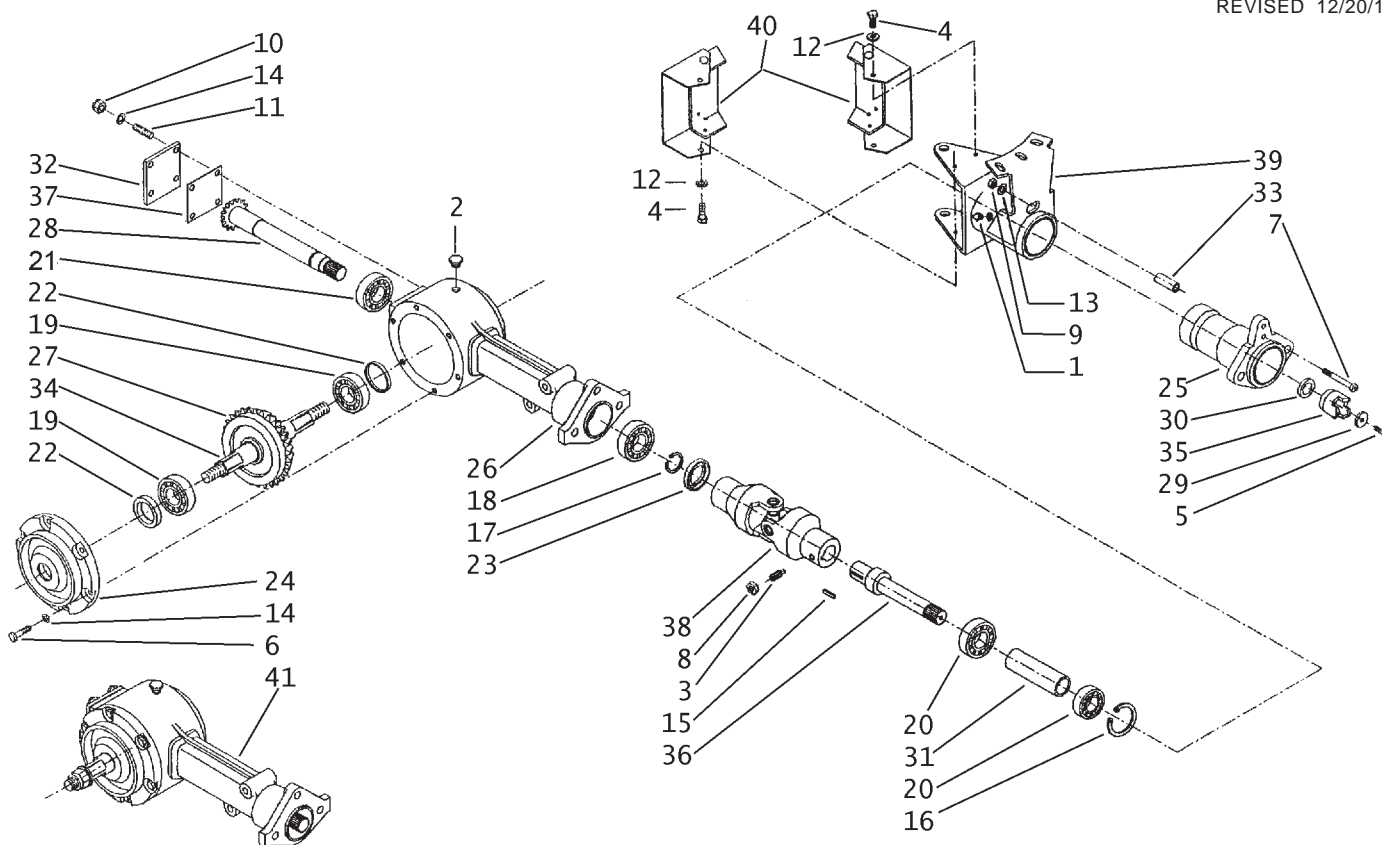


27- NOTE BRUSHES HAVE CHANGED, THE INSIDE 2 BRUSHES ARE A 581.90462 (21" BRUSH) AND THE OUTSIDE 2 BRUSHES ARE A 581.90454 (19.5" BRUSH)

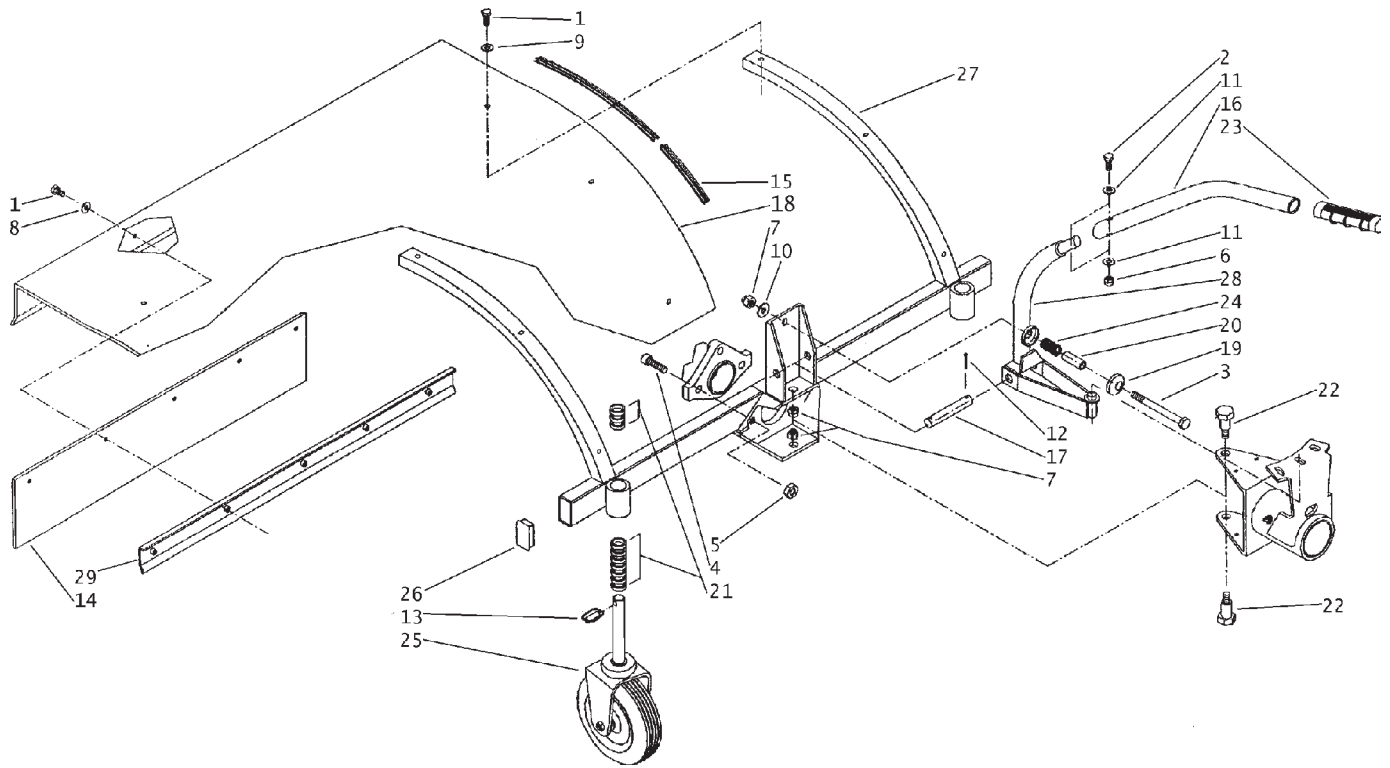
ID	PART NO	DESCRIPTION	ID	PART NO	DESCRIPTION
1	311.00360	SET SCREW, M10X10	26	581.90453	BRUSH, WAVE
2	311.11090	SCREW, TE M6X10	27	*** *****	BRUSH, CONCAVE
3	311.11097	SCREW, TE M6X45	28	581.90457	DRUM
4	311.12092	SCREW, M6X35	29	581.90459	CASTER WHEEL
5	311.12211	SCREW M10X30	30	581.90460	ADJUSTING SCREW
6	311.12215	SCREW M10X60	31	581.90461	FRAME, SUPPORT
7	311.12272	SCREW, M12X30	32	581.90464	HOOD
8	311.12438	SCREW, M16X40 - FOR OLD UNITS	33	581.90468	"U" JOINT
9	312.31160	NUT, M16 - FOR OLD UNITS	34	581.90469	BRACE WITH ANGLE PLATE
10	312.41060	NUT, SELF LOCKING M6	35	581.90471	PTO SHAFT
11	312.41080	NUT, M8	36	581.90473	HITCH
12	312.41100	NUT, M10 - NEWER UNITS	37	581.90475	PIN, HITCH
13	312.41120	NUT, M12	38	581.90477	SPRING
14	314.11064	WASHER, FLAT M6.4	39	581.90478	BAR, ANGLE ADJUSTER
15	314.11130	WASHER, FLAT M13	40	581.90479	LEVER, ANGLE ADJUSTER
16	314.11170	WASHER FLAT M17	41	581.90480	GRIP, RUBBER
17	314.13064	WASHER, FLAT 6.4	42	581.90482	KEY
18	314.23105	WASHER, LOCK 10.5	43	581.90486	FLAP
19	371.12249	BEARING, M25X52X15	44	581.90487	PIN, FLAP
20	371.12252	BEARING, M25X47X12	45	599.90762	GUARD, RH
21	561.48440	SHOLDER SCREW - NEWER UNITS	46	599.90763	GUARD, LH
22	580.47975	"READ OWNERS MANUAL" DECAL	47	599.90764	GUARD, TOP
23	581.27434	CIRCLIP, EXTERNAL	48	900.00002	"BCS" DECAL
24	581.27489	HAIR PIN			
25	581.90452	DISC			



ID	PART NO	DESCRIPTION	ID	PART NO	DESCRIPTION
1	300.40001	PLUG 1/4	16	382.12503	OIL SEAL
2	311.12151	SCREW M8 X 25	17	511.48428	COUPLING
3	312.41080	NUT, SELF LOCKING M8	18	512.48405	ROTARY HOE CENTRAL ASSEMBLY
4	312.41085	NUT	19	524.48411	PINION SHAFT, EXTENDED
5	312.41141	NUT, SELF LOCKING M14	20	561.48438	WASHER
6	313.12078	SUTD M8 X 32 X 14 X 14	21	580.43407	GASKET
7	313.12081	STUD M8 X 38 X 14 X 14	22	580.49859	ROTARY HOE GASKET
8	314.21083	SUPER WASHER 8 DIN	23	590.48408	SHAFT WITH GEAR
9	314.23084	WASHER, LOCK M8.4	24	561.49858	REAR COVER FOR ROTARY HOE
10	351.21020	CIRCLIP EXTERN. D20			
11	371.11200	BEARING 20 X42 X 12 6004			
12	371.11255	BEARING 25 X 52 X 15 6205			
13	371.41201	BEARING 20 X 47 X 14 7204 B			
14	371.41250	BEARING			
15	382.12003	OIL SEAL 20 X 42 X 7 STANDARD			



ID	PART NO	DESCRIPTION	ID	PART NO	DESCRIPTION
1	300.00001	FITTING GREASE STRAIGHT	26	512.48405	TRANSMISSION HOUSING
2	300.40001	PLUG 1/4 GAS	27	524.48406	CROWN GEAR, CONICAL
3	311.00805	SCREW STEIC M10X12	28	524.48411	PTO SHAFT/SWEEPER/
4	311.11090	CAPSCREW M6X10	29	561.42291	WASHER 7X25X4
5	311.12090	CAPSCREW M6X16	30	561.43506	SPACER
6	311.12151	CAPSCREW M8X25	31	561.58954	SPACER
7	311.12156	CAPSCREW M8X6	32	561.59235	COVER, REAR
8	312.31090	NUT, M10	33	561.59749	SPACER
9	312.41080	LOCKNUT M8 STANDARD	34	564.48432	SHAFT
10	312.41085	LOCKNUT M8 DEFORMED	35	564.58941	COUPLER PTO
11	313.12078	STUD M8X32X14X14	36	564.59755	SHAFT
12	314.11064	WASHER FLAT M6 4X12 5	37	580.49859	GASKET
13	314.11084	WASHER FLAT M8 4X17	38A	581.59752	JOINT (30" SWEEPER)
14	314.21083	WASHER SUPER M8	38B	581.59758	JOINT (40" SWEEPER)
15	343.21063	SNAP RING INTERNAL D 47	39	590.59723	COUPLING, ADJUSTABLE
16	351.11047	SNAP RING INTERNAL D 47	40	590.59745	GAURD
17	351.21020	SNAP RING EXTERNAL D 20	41	592.48415	TRANSMISSION, COMPLETE
18	371.11200	BEARING 20X42X12			
19	371.11255	BEARING 25X52X15			
20	371.12200	BALL BEARING 20X47X14			
21	371.41201	BEARING 20X47X14			
22	382.02001	OIL SEAL 25X35X7			
23	382.12003	OIL SEAL 20X42X7			
24	511.48428	SIDE COVER			
25	512.43501	BUSHING W/FLANGE			



ID	PART NO	DESCRIPTION	ID	PART NO	DESCRIPTION
1	311.12090	CAPSCREW M6X16	16	561.59716	POSITIONING TUBE
2	311.12154	CAPSCREW M8X40	17	561.59738	PIN LEVER ADJUSTING
3	311.12228	CAPSCREW M10X120	18	561.59795	SHIELD
4	311.52121	CAPSCREW	19	561.59743	CAP SPRING
5	312.11120	NUT M12	20	561.59748	SPACER SPRING
6	312.41080	LOCKNUT M8 STANDARD	21	561.59753	SPACER
7	312.41100	LOCKNUT M10 STANDARD	22	563.59744	SCREW, M10, SPECIAL
8	314.11064	WASHER FLAT M6 4X12.5	23	580.48000	GRIP
9	314.11066	WASHER FLAT M6 6X18	24	580.59737	SPRING LEVER ORIENTATION
10	314.11104	WASHER FLAT M10.5X18	25	581.59756	WHEEL, NYLON
11	314.23084	WASHER LOCK B 8.4	26	581.59757	PLUG, FINNED M50X30
12	341.10041	PIN COTTER A 4X25 UNI 1336	27	590.59787	FRAME
13	342.40080	RELEASE PIN	28	590.59709	LEVER, ORIENTATION
14	552.59786	RUBBER SKIRT. PROTECTION	29	590.59784	RETAINER
15	552.59759	PROFILE, U 15MM			

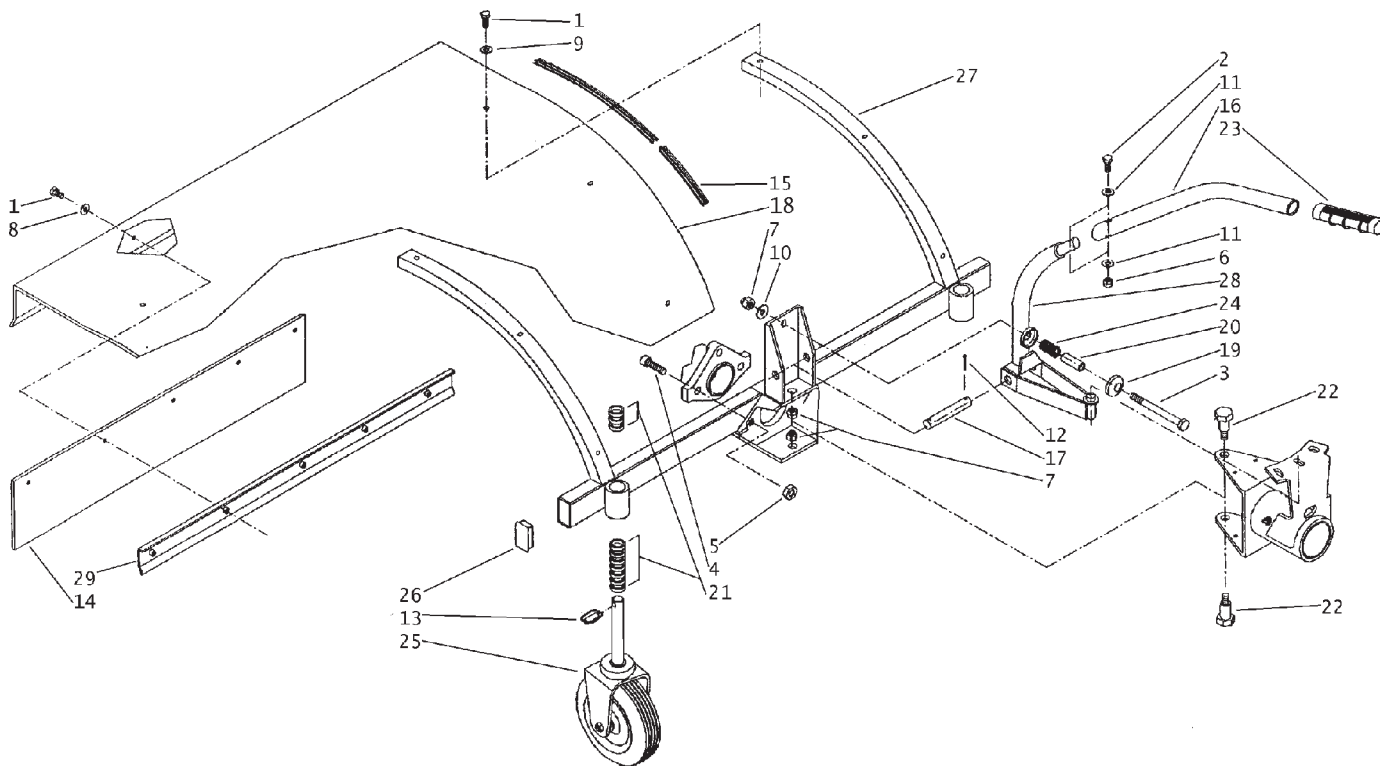
**Attachment
Sweeper**

**Sweeper Main Frame
40" Sweeper**

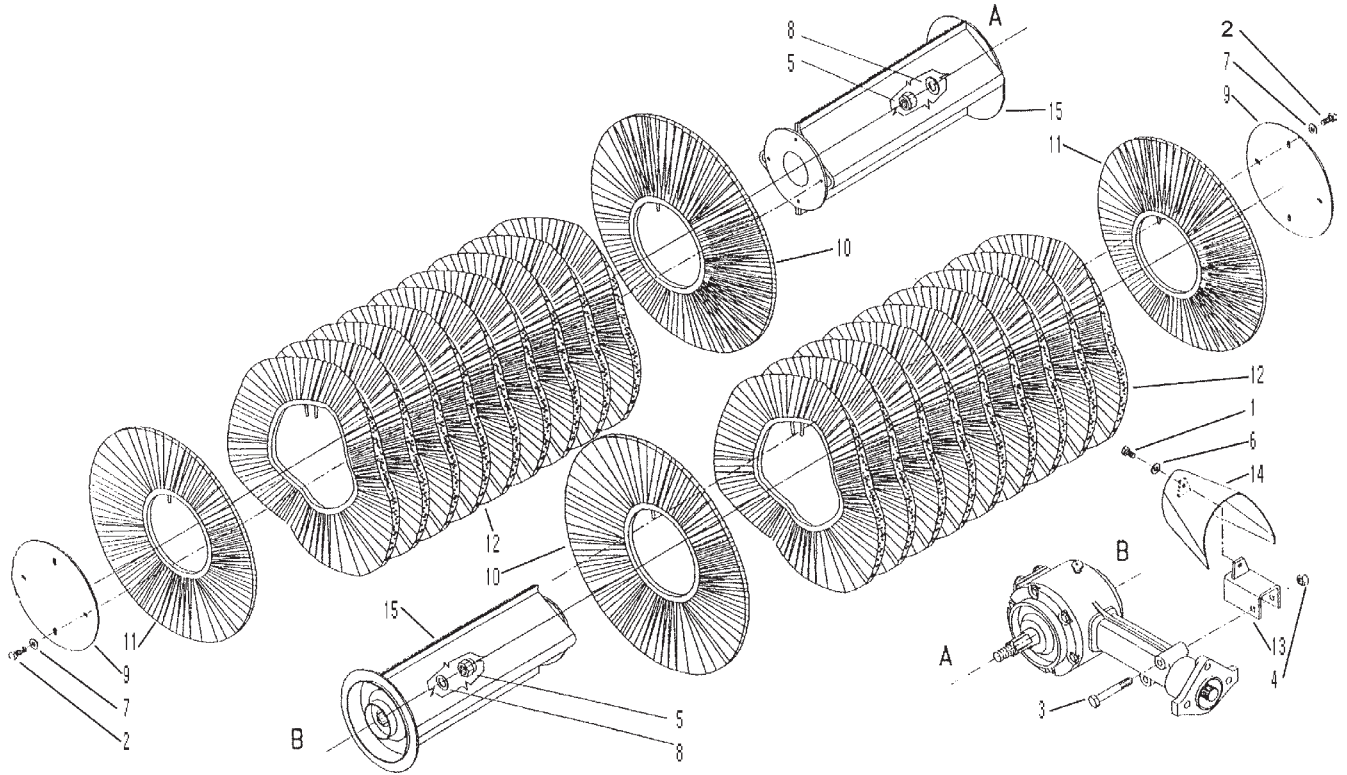
Serial Number Range
S/N: 127176 +

04.00

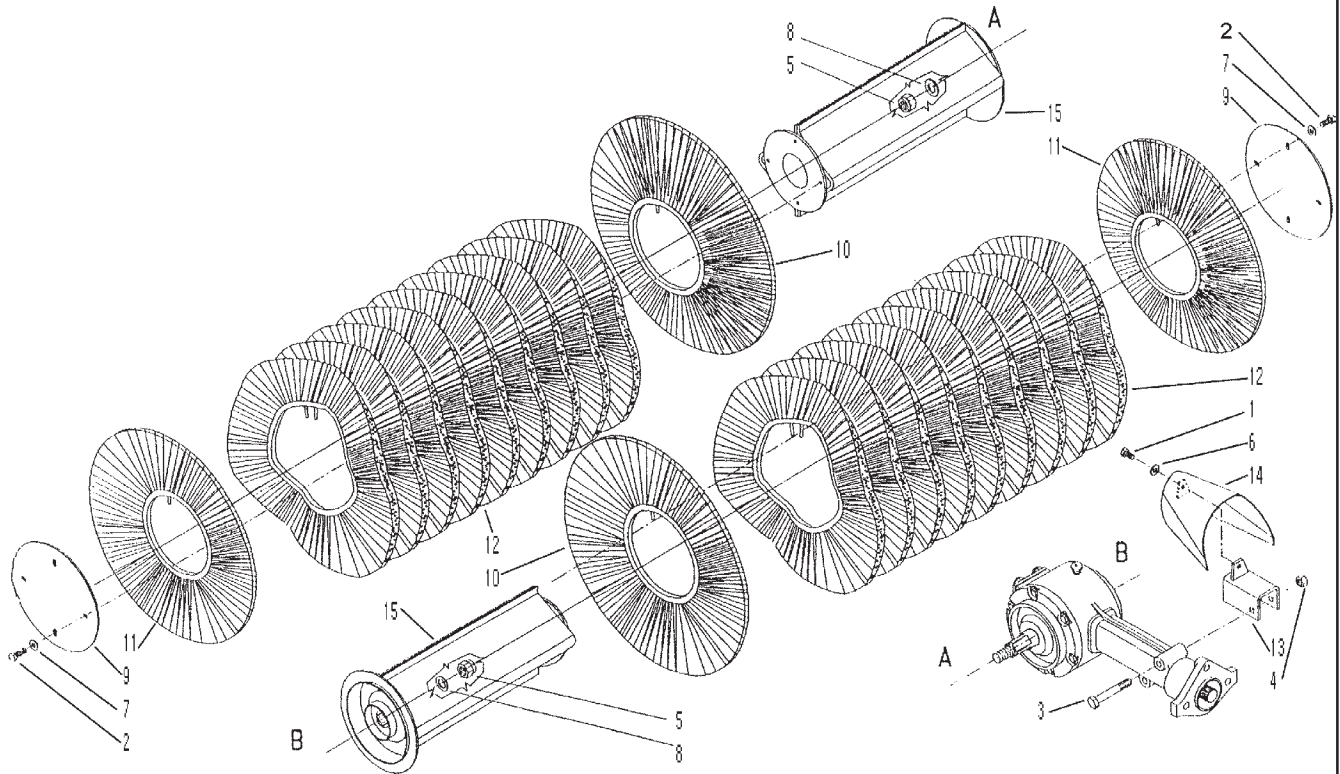
REVISED 05/28/10



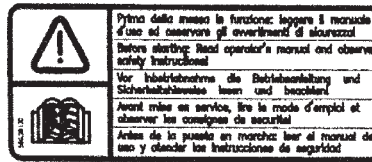
ID	PART NO	DESCRIPTION	ID	PART NO	DESCRIPTION
1	311.12090	CAPSCREW M6X16	16	561.59716	TUBE, POSITIONING
2	311.12154	CAPSCREW M8X40	17	561.59738	PIN, LEVER ADJUSTING
3	311.12228	CAPSCREW M10X120	18	561.59739	CASING
4	311.52121	SCREW M12X35	19	561.59743	CAP
5	312.11120	NUT M12	20	561.59748	SPACER
6	312.41080	LOCKNUT M8 STANDARD	21	561.59753	SPACER
7	312.41100	LOCKNUT M10 STANDARD	22	563.59744	SPECIAL SCREW M10
8	314.11064	WASHER FLAT M6 4X12.5	23	580.48000	GRIP
9	314.11066	WASHER FLAT M6 6X18	24	580.59737	SPRING, LEVER ORIENTATION
10	314.11104	WASHER FLAT M10.5X18	25	581.59756	WHEEL
11	314.23084	WASHER LOCK B 8.4	26	581.59757	PLUG, FINNED
12	341.10041	PIN COTTER A 4X25 UNI 1336	27	590.59708	FRAME
13	342.40080	RELEASE PIN	28	590.59709	LEVER, ORIENTATION
14	552.59742	PROTECTION	29	590.59740	RETAINER WITH ROLLER
15	552.59759	PROFILE, U 15MM			



ID	PART NO	DESCRIPTION	ID	PART NO	DESCRIPTION
1	311.11151	CAPSCREW, M8X16			
2	311.12210	CAPSCREW, M10X20			
3	311.12214	CAPSCREW, M10X45			
4	312.11100	NUT, M10			
5	312.41141	LOCKNUT, M14 STANDARD			
6	314.21083	WASHER, SUPER M8			
7	314.21101	WASHER, SUPER M10			
8	561.48438	WASHER			
9	561.59781	END PLATE			
10A	33301	BRUSHES, CONICAL, (POLY ONLY)			
10B	33360	BRUSHES, CONICAL, (POLY/WIRE)			
11A	33301	BRUSHES, CONICAL, (POLY ONLY)			
11B	33360	BRUSHES, CONICAL, (POLY/WIRE)			
12A	33300	BRUSHES, WAVEY, (POLY ONLY)			
12B	33302	BRUSHES, WAVEY, (POLY/WIRE)			
13	590.59728	BRACKET			
14	590.59732	COVER			
15	590.59782	DRUM, 30" SWEEPER			
NI	92299009	POLY BRUSH SET COMPLETE (14) 33300 (4) 33301			



ID	PART NO	DESCRIPTION	ID	PART NO	DESCRIPTION
1	311.11151	CAPSCREW, M8X16			
2	311.12210	CAPSCREW, M10X20			
3	311.12214	CAPSCREW, M10X45			
4	312.11100	NUT, M10			
5	312.41141	LOCKNUT, M14 STANDARD			
6	314.21083	WASHER, SUPER M8			
7	314.21101	WASHER, SUPER M10			
8	561.48438	WASHER			
9	561.59781	END PLATE			
10A	33301	BRUSHES, CONICAL, (POLY ONLY)			
10B	33360	BRUSHES, CONICAL, (POLY/WIRE)			
11A	33301	BRUSHES, CONICAL, (POLY ONLY)			
11B	33360	BRUSHES, CONICAL, (POLY/WIRE)			
12A	33300	BRUSHES, WAVEY, (POLY ONLY)			
12B	33302	BRUSHES, WAVEY, (POLY/WIRE)			
13	590.59728	BRACKET			
14	590.59732	COVER			
15	590.59775	DRUM, 40" SWEEPER			
NI	92299001K	BRUSH SET COMPLETE (18) 33300 (4) 33301			
NI	92299008	POLY/WIRE BRUSH SET COMPLETE (18) 33302 (4) 33360			



SWEEPER 100



SWEEPER 80

ID	PART NO	DESCRIPTION	ID	PART NO	DESCRIPTION
1	580.28130	DECAL, READ OP. MANUAL			
2	580.33228	DECAL, DANGER			
3	580.59762	DECAL, SWEEPER 100 (40")			
4	580.59763	DECAL, SWEEPER 80 (30")			
5	900.00002	DECAL, BCS			
6	901.00700	DECAL, MADE IN ITALY			