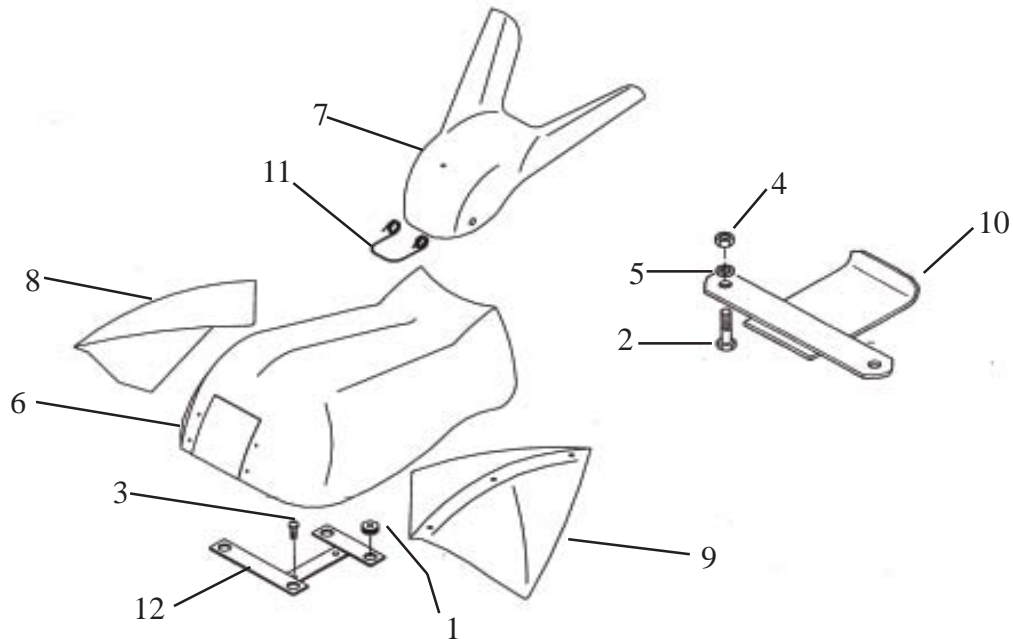




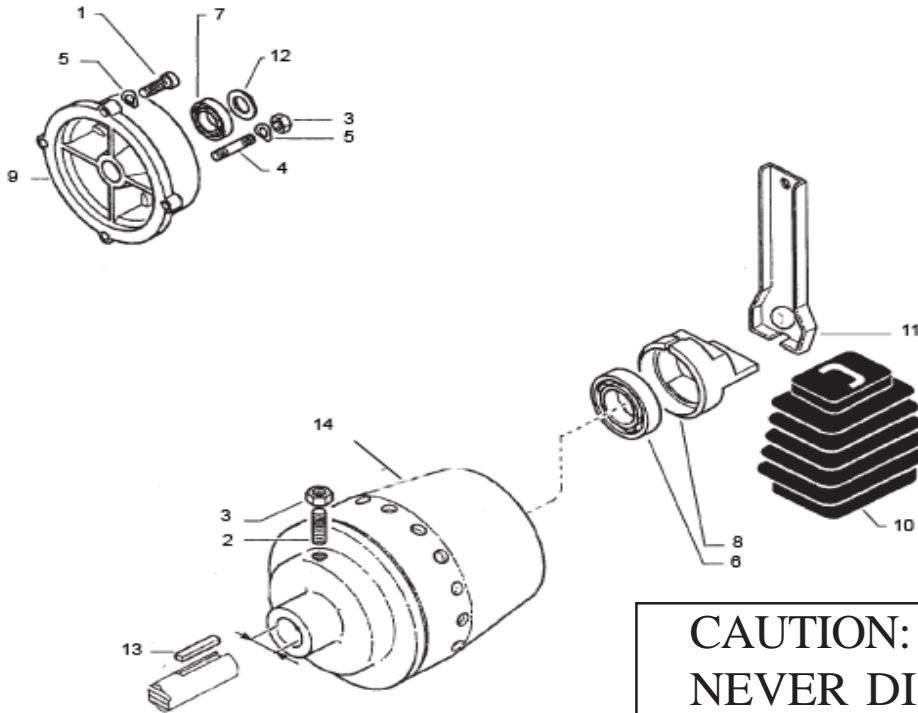
---

A M E R I C A

---

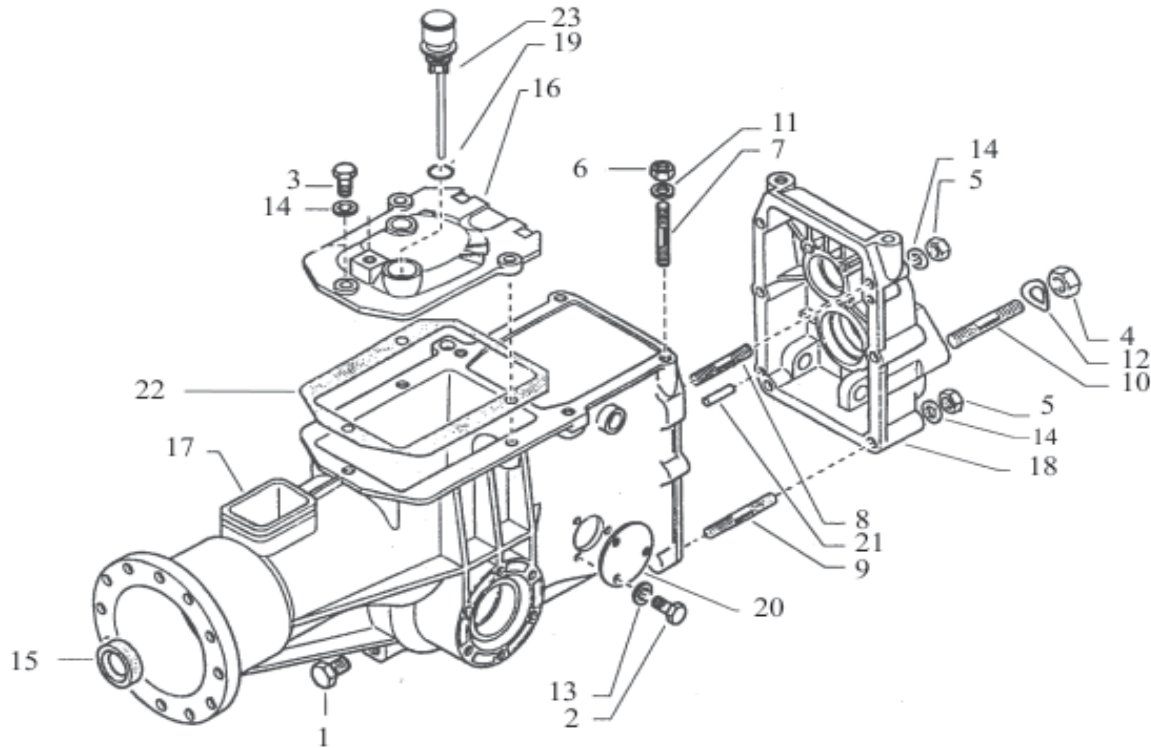
**620 MAX****FRONT COVER**Serial Number Range  
**ALL****01.00**

ID	Part Number	Qty.	Description	ID	Part Number	Qty.	Description
1	300.00629	4	Bushing				
2	311.12154	2	Capscrew M8X40				
3	311.21005	2	Screw, Flanged				
4	312.41080	2	Locknut M8				
5	314.11084	2	Washer, Flat M8				
6	552.57500	1	Cover, Center				
7	552.57501	1	Cover, V-shaped				
8	552.57502	1	Cover, Left				
9	552.57503	1	Cover, Right				
10	561.56119	1	Bumper				
11	580.56889	1	Spring				
12	590.57504	1	Support, Body				

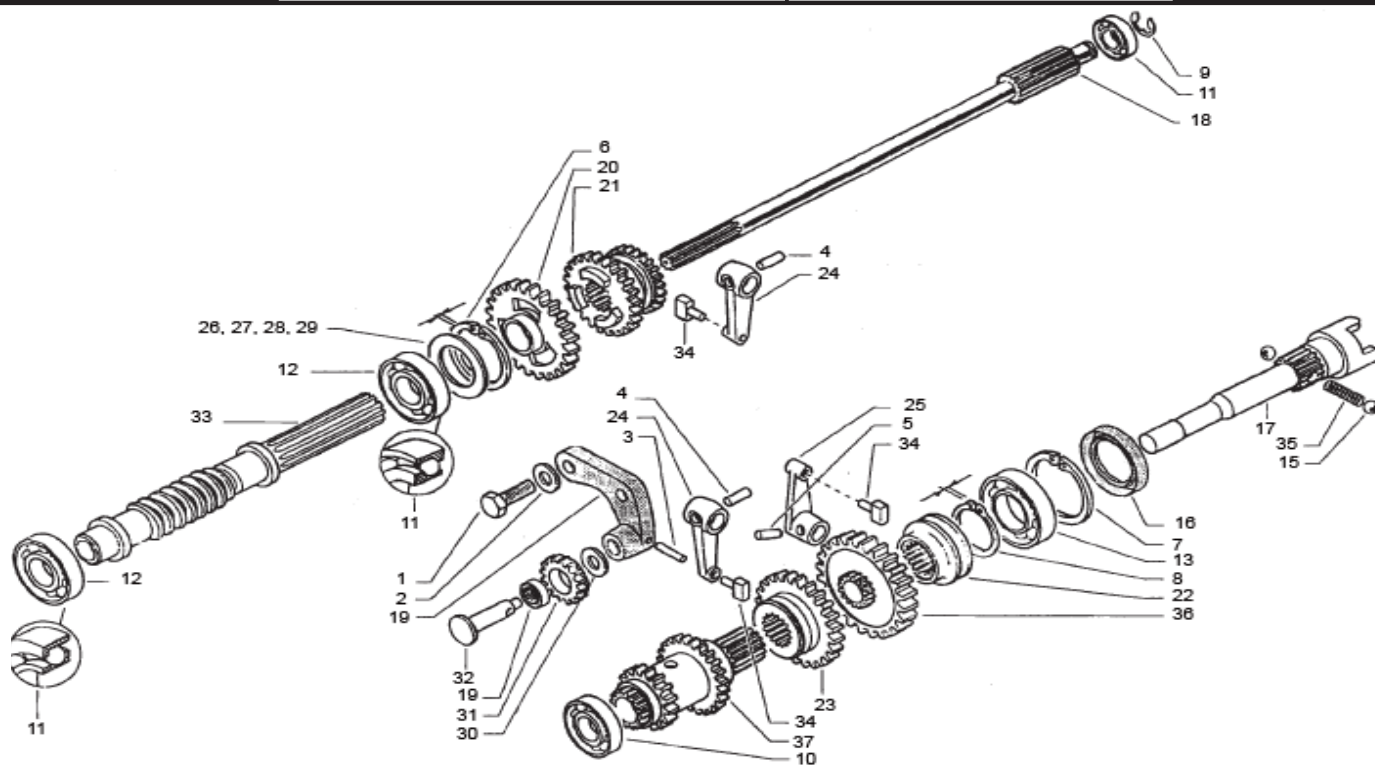


**CAUTION:  
NEVER DISASSEMBLE  
THE CLUTCH!**

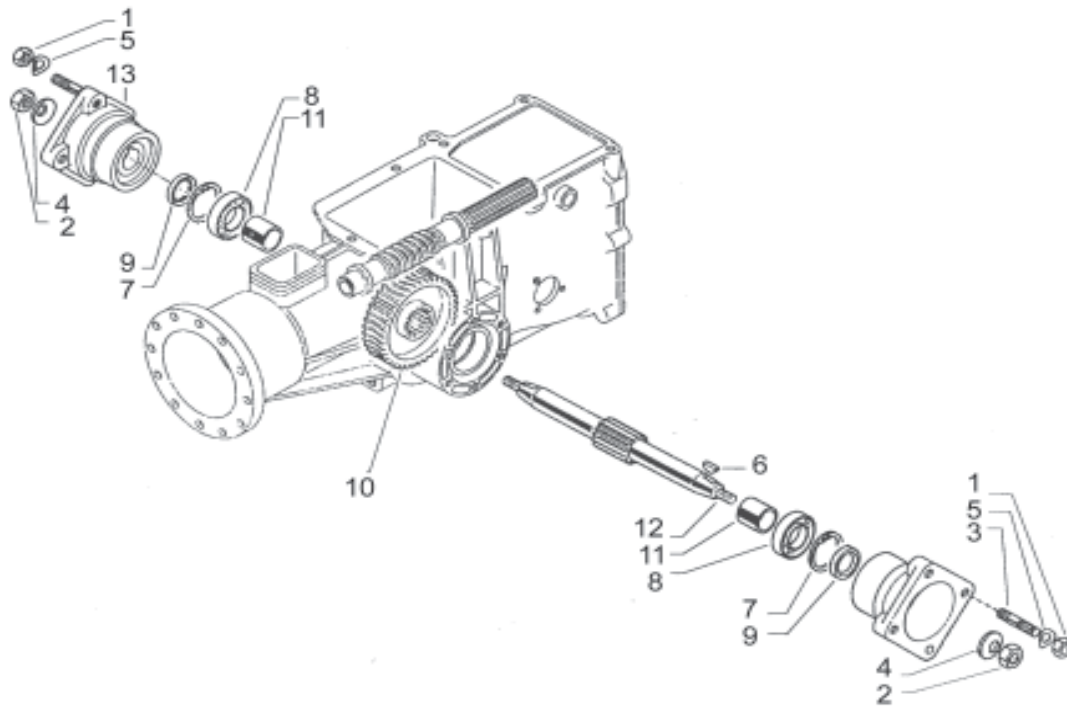
ID	Part Number	Qty.	Description	ID	Part Number	Qty.	Description
1	311.00015	4	Screw 3/8X1"				
2	311.00786	1	Screw M8X30				
3	312.11080	7	Nut, M8				
4	313.12088	6	Stud, M8X40X14X14				
5	314.23084	10	Washer, Wavey				
6	371.12173	1	Bearing, M17X40X12				
7	371.12233	1	Bearing, M30X55X13				
8	524.47896	1	Cone Pusher				
9	531.56150	1	Flange, Honda GX240				
10	551.47842	1	Boot				
11	561.47845	1	Lever, Recoil Start				
12	563.47484	1	Washer				
13	563.49782	1	Key				
14	592.56253	1	Clutch, Honda GX240 (comes with # 2,3,6 and 8)				



ID	Part Number	Qty.	Description	ID	Part Number	Qty.	Description
1	300.40001	1	Plug 1/4 Gas Uni 364	22	580.43117	1	Gasket, Cover
2	311.11090	1	Capscrew M6x10 Uni 5739-8G	23	590.15425	1	Cap W/ Measuring Rod
3	311.12151	1	Capscrew M8x25 Uni 5739-8G				
4	312.21121	2	Nut M12x1.25 Uni 5587-6S				
5	312.41080	6	Locknut M8 Standard Din 985zc				
6	312.41085	4	Locknut M8 Deformed				
7	313.12082	4	Stud M8x38x14x20 Grade 8				
8	313.12084	2	Stud M8x58x16x16 Grade 8				
9	313.12094	4	Stud M8x70x16x16 Grade 8				
10	313.12125	2	Stud M6x12x1.25x26x12				
11	314.21083	4	Washer, Super M8 Din 6796				
12	314.21132	2	Washer, Tapered M13x24x3				
13	314.22064	1	Washer, Lock 6 4 Din 137				
14	314.23084	7	Washer, Lock b 8.4 Din 137a zi				
15	382.11500	1	Oil Seal 15x28x7				
16	531.43879	1	Cover, Closed Gearbox				
17	531.56326	1	Gearbox Casing				
18	531.56332	1	Rear Cover				
19	551.02678	1	Ring, Rubber				
20	561.47520	1	Cover, Side				
21	580.43053	1	Pin, Cylindrical D 6x18				



ID	Part Number	Qty.	Description	ID	Part Number	Qty.	Description
1	311.12211	2	Bolt M10x30	22	524.56362	1	Slider Gear
2	314.21101	2	Washer	23	524.56370	1	Reverser Slider
3	342.11042	1	Pin M4x25	24	524.56389	2	Lever, Reverser
4	342.13060	2	Pin M6x24	25	524.56390	1	Lever, PTO Engagement
5	342.13061	1	Pin M6x20	26	563.56328	1	Shim 1.5mm
6	351.11053	1	Clip 2.5MM	27	563.56329	1	Shim 1.6mm
7	351.11055	1	Clip	28	563.56330	1	Shim 1.7mm
8	351.21031	1	Clip 2MM	29	563.56331	1	Shim 1.8mm
9	352.11120	1	E Clip	30	563.56348	1	Washer
10	371.11151	1	Bearing 15x35x11 6202-zz skf	31	564.56347	1	Gear, Reverser
11	371.11152	1	Bearing M15x42x13	32	564.56351	1	Pin, Reverser Gear
12	371.11255	2	Bearing M25x52x15	33	564.56478	1	Gear, Worm
13	371.12229	1	Bearing M30x55x13	34	580.43086	3	Shoe
14	373.20120	1	Roller Bearing M12x15x10	35	580.56391	1	Spring
15	379.10832	2	Ball 1/4"	36	590.56365	1	Gear, PTO Complete
16	382.13800	1	Seal M38x55x7	37	590.56383	1	Gear, Cluster
17	524.56336	1	Shaft				
18	524.56340	1	Shaft				
19	524.56349	1	Reverser Support				
20	524.56354	1	Gear, first				
21	524.56360	1	Gear, Slider 3+4				

**620 MAX****WHEELAXLE**Serial Number Range  
**ALL****05.00**

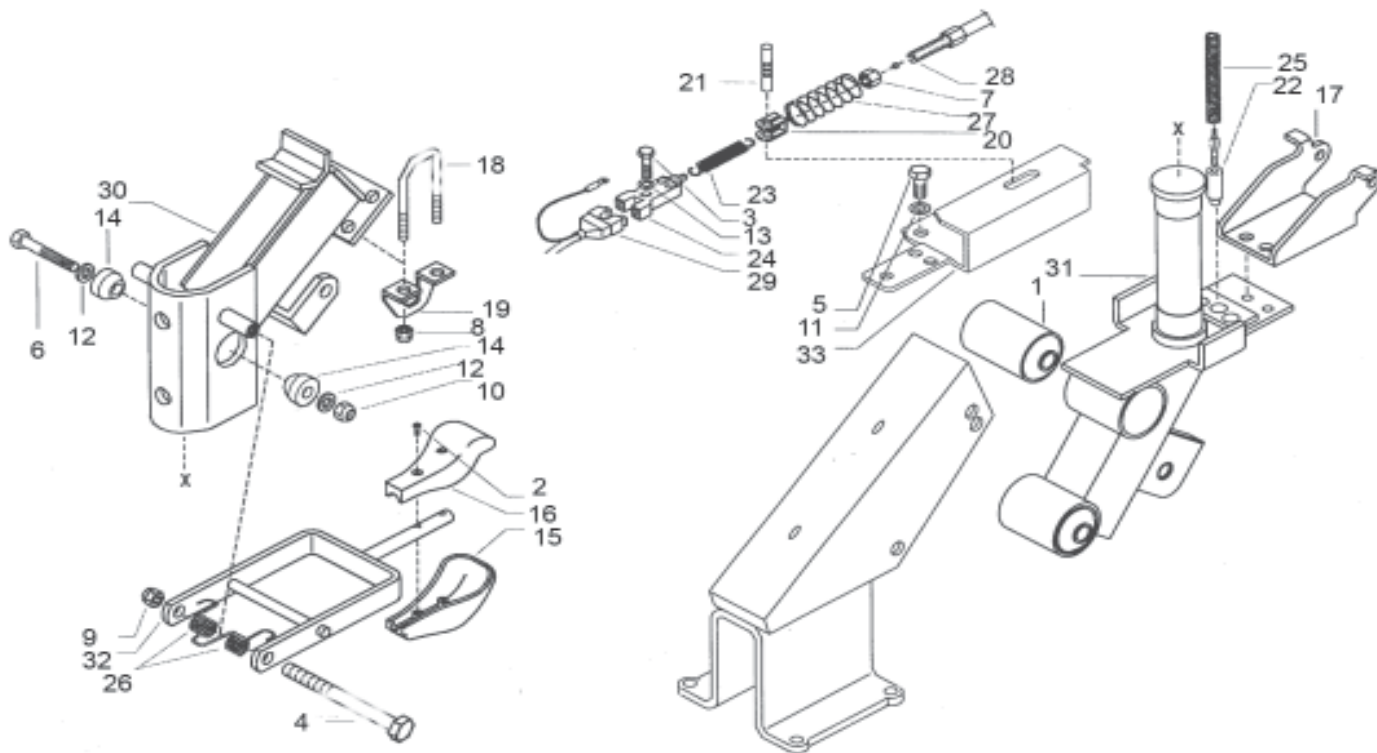
ID	Part Number	Qty.	Description	ID	Part Number	Qty.	Description
1	312.11100	8	Nut M8 UNI5588-6S				
2	312.41120	2	Nut M12				
3	313.12102	8	Stud M10X40				
4	314.21130	2	Washer				
5	314.23105	8	Washer				
6	343.11060	2	Key M6X10				
7	351.11052	2	C Clip				
8	371.11250	2	Bearing M25X52X15				
9	382.12501	2	Seal M25X52X10				
10	541.43149	1	Gear Z 49 LH Motor				
11	561.43059	2	Spacer				
12	563.43058	1	Shaft				
13	590.43063	2	Wheel Hub W/ Studs				

# 620 MAX

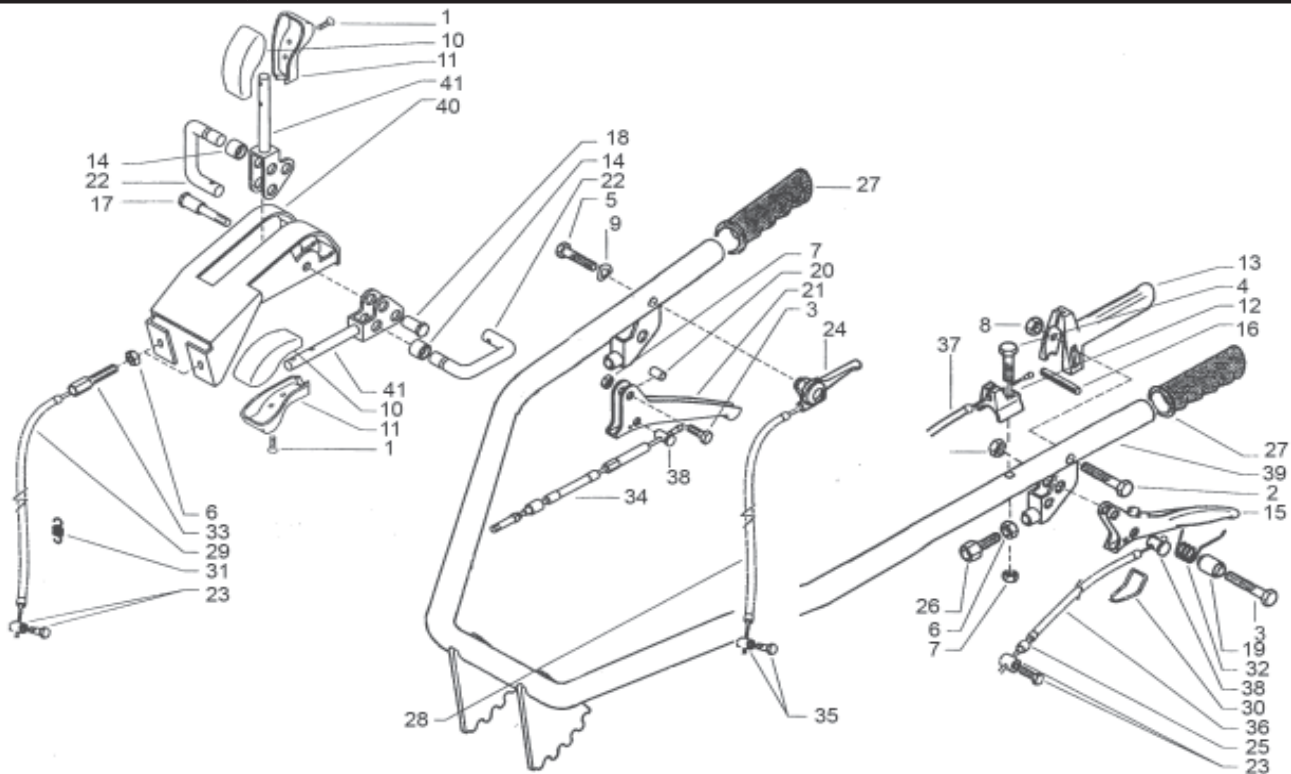
# STEERING COLUMN

Serial Number Range  
**ALL**

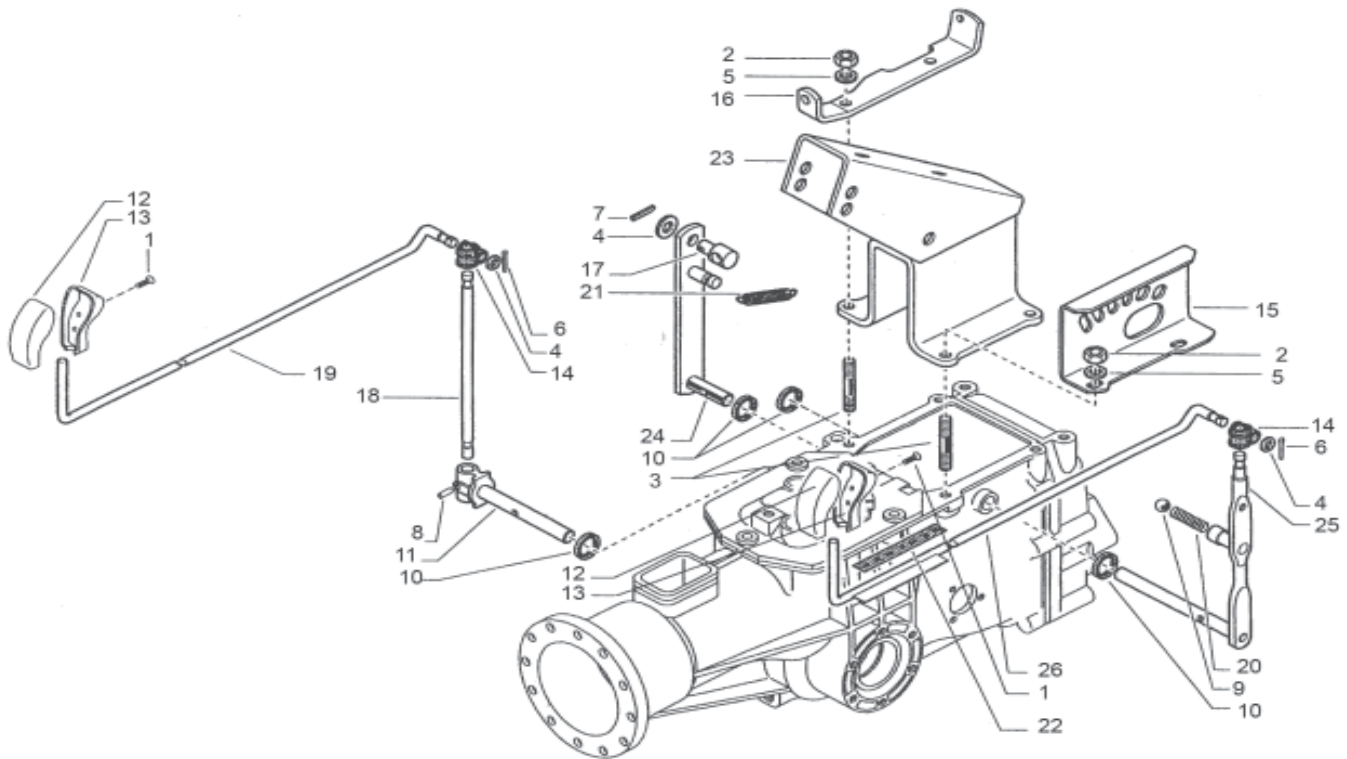
# 06.00



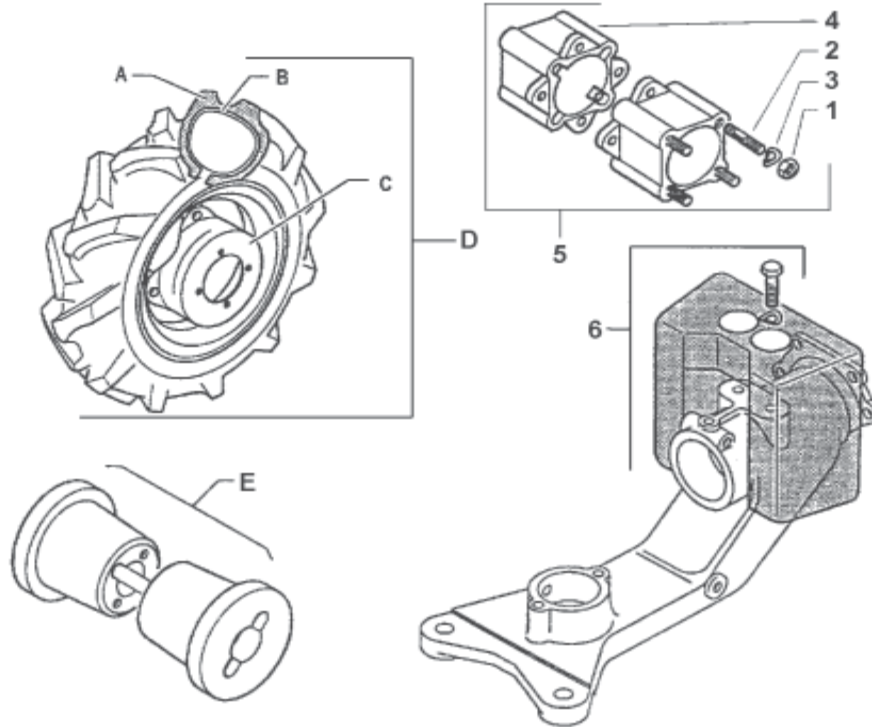
ID	Part Number	Qty.	Description	ID	Part Number	Qty.	Description
1	300.10120	2	Silent Block	22	563.56924	1	Pin
2	311.00451	2	Screw M5X25 UNI 10228	23	580.47712	1	Spring, Stop Complete
3	311.11086	3	Bolt M4X25	24	580.48009	1	Stop Switch
4	311.11229	1	Bolt M10X110	25	580.56918	1	Spring, Steering Column
5	311.12150	2	Bolt M8X20 UNI 5739-8G	26	580.56942	1	Spring, Release
6	311.12293	1	Bolt M12X80	27	580.57413	1	Spring, Check Motor Stop
7	312.11080	1	Nut M8	28	580.57415	1	Cable With Sheath
8	312.41080	4	Nut M8	29	580.57417	1	Motor Stop Wiring
9	312.41100	1	Nut M10 Din 985zc	30	590.56875	1	Upper Steering Column
10	312.41126	1	Nut M12 Deformed	31	590.56886	1	Adjustable Column Complete
11	314.21083	2	Washer	32	590.56887	1	Lever Release, Handle Bar
12	314.21100	2	Washer	33	592.57409	1	Support, Engine Stop
13	314.23043	3	Washer				
14	521.56917	2	Grommet, Rubber				
15	551.57212	1	Upper Handle				
16	551.57213	1	Lower Handle				
17	561.56881	1	Rod, Support Coupling				
18	561.56940	2	U Bolt				
19	561.56948	2	Bracket				
20	561.57411	1	Motor Stop Fork				
21	561.57412	1	Spring Check Pin				

**620 MAX****HANDLEBAR**Serial Number Range  
**ALL****07.00**

ID	Part Number	Qty.	Description	ID	Part Number	Qty.	Description
1	311.00451	4	Screw M5x25 uni 10228	23	580.02429	2	Clamp, Cable
2	311.11097	1	Bolt, Hex M6x45 uni5737 8G	24	580.02538	1	Lever, Accelerator
3	311.12089	2	Bolt, Hex M6x25 uni5739 8G	25	580.42167	1	Sheath End
4	311.12092	1	Capscrew M6x35 uni5739-8G	26	580.42202	1	Screw, Adjusting M8
5	311.12153	1	Capscrew M6x25 uni5739-8G	27	580.48000	2	Grip
6	312.11080	2	Nut M8 din934 uni 5588-5s	28	580.48012	1	Cable, Accel 73shx79 25c l=1850
7	312.41060	3	Locknut M6 Standard	29	580.49670	1	Cable, Differential Brake Cable
8	312.41061	1	Locknut M6 Deformed	30	580.51670	1	Stop Wire
9	314.23084	1	Washer, Lock B 8.4 din137a Zink	31	580.56155	1	Spring
10	551.57214	2	Upper Handle Piece Red	32	580.56593	1	Spring, Clutch Lever
11	551.57215	2	Lower Handle Piece Red	33	580.56595	1	Screw, Adj.
12	552.48038	1	Guide, Cable	34	580.57211	1	Cable, Steering Column Release
13	552.48041	1	Lever, Motor Stop	35	580.57263	1	Clamp, Cable
14	552.57209	2	U-Bolt Bushing	36	580.57357	1	Cable & Sheath L=940
15	561.47655	1	Lever, Clutch	37	580.57415	1	Cable/Sheath M/S L=940
16	561.48037	1	Stop, Motor Stop Lever	38	581.50313	2	Barrel
17	561.48285	1	Pin	39	590.57121	1	Handle Bar
18	561.48287	1	Bushing, Reverser Lever	40	590.57201	1	Lever Support Complete
19	561.50361	1	Spacer, Lever	41	590.57210	2	Control, Lever
20	561.56603	1	Lever, Spacer				
21	561.56604	1	Brake & Clutch Lever				
22	561.57208	2	U-Bolt				



ID	Part Number	Qty.	Description	ID	Part Number	Qty.	Description
1	311.00451	4	Screw M5x25 uni10228	23	590.56975	1	Steering Column Support
2	312.41085	4	Locknut M8 Deformed	24	590.57240	1	Inverter Lever Complete
3	313.12082	4	Stud M8x38x14x20 8G	25	590.57252	1	Gear Lever Complete
4	314.11104	3	Washer, Flat M10.5x18 uni6592	26	590.57366	1	Gearbox Control Rod
5	314.21083	4	Washer, Super M8 din 6796				
6	341.10028	2	Pin, Cotter A 2x15 uni1336				
7	342.11029	1	Special Pin A 3x35 uni1336				
8	342.13020	1	Pin, Split 4x20 Spirol uni6876				
9	379.11532	1	Ball 15/32				
10	382.11400	4	Oil Seal M14x22x4				
11	523.57250	1	Shaft, PTO				
12	551.57212	2	Upper Handle Release knob				
13	551.57213	2	Lower Handle Release knob				
14	561.42548	2	Block				
15	561.57235	1	Gear Selector MF				
16	561.57244	1	Reverse Rod Lever Extension				
17	561.57246	1	Sheath Stop				
18	561.57256	1	PTO Lever				
19	561.57367	1	PTO Control Rod				
20	580.43176	1	Spring				
21	580.57247	1	Cap Spring				
22	580.57698	1	Sticker				



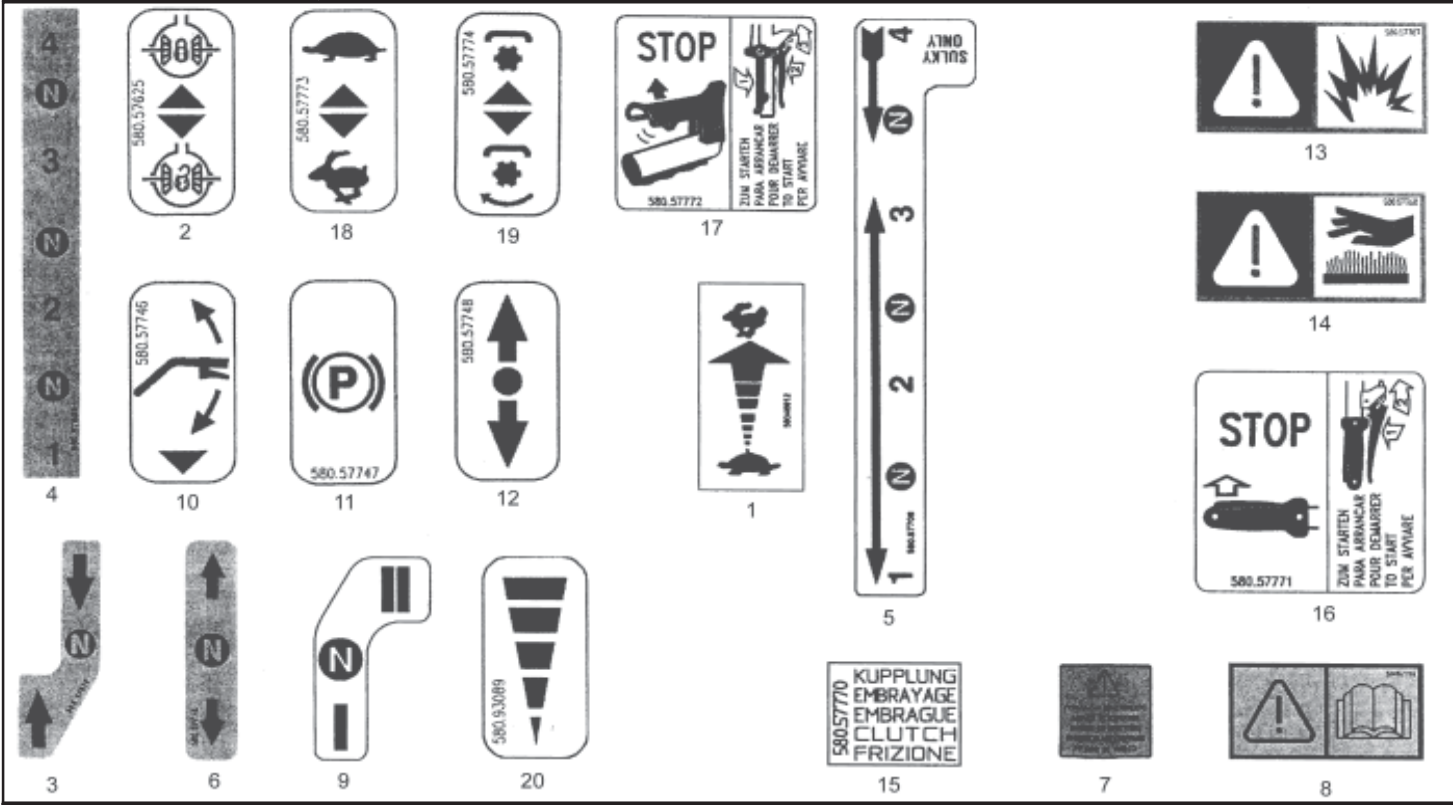
ID	Part Number	Qty.	Description	ID	Part Number	Qty.	Description
1	312.11100		Nut M10	4	922.43685	set	Sold as a comp. wheel ext. kit
2	313.12103		Stud M10x46x24x12	5	922.43685	set	Wheel Extension Complete
3	314.23105		Washer M10.5	6	922.48923	set	Sickle Bar Weight 26lb.
A	391.13502		Tire 3.50-8"	D	922.57775	set	Wheels Complete 15 X 3.50-8
	391.14008		Tire 4.00-8"		922.43680	set	Wheels Complete 16 X 4.00-8
	391.14010		Tire 4.00-10"		922.48332	set	Wheels Complete 18 X 4.00-10
	391.15010		Tire 5.00-10"		922.48334	set	Wheels Complete 19 X 5.00-10
	391.15012		Tire 5.00-12"		922.44806	set	Wheels Complete 22 X 6.50-12
	391.16018		Tire 6.50-12"		922.44809	set	Wheels Complete 22 X 5.00-12
B	394.13502		Tube 3.50-8"	E	922.43686	set	Wheel Weights 48lbs 3.50-8 & 4.00-8
	394.14008		Tube 4.00-8"		922.48715	set	Wheel Weights 66lbs 4.0-10 & 5.0-10
	394.14010		Tube 4.00-10"		922.48720	set	Wheel Weights 150lbs 5.0-12 & 6.0-12
	394.15010		Tube 5.00-10"				
	394.15012		Tube 5.00-12"				
	394.16018		Tube 6.50-12"				
C	580.43250		Rim 3.50-8" & 4.00-8"				
	580.48330		Rim 4.00-10" & 5.00-10"				
	580.44804		Rim 5.00-12" & 6.50-12"				

# 620 MAX

# DECALS

Serial Number Range  
**ALL**

# 10.00



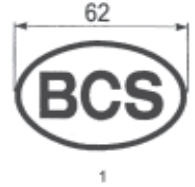
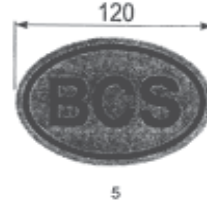
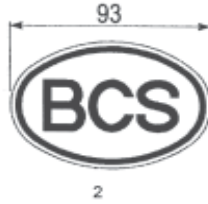
ID	Part Number	Qty.	Description	ID	Part Number	Qty.	Description
1	580.46912		Sticker				
2	580.57625		Decal				
3	580.57676		Decal Speed Selector				
4	580.57698		Sticker				
5	580.57706		Gear Decal				
6	580.57712		Sticker				
7	580.57722		Decal				
8	580.57724		Decal Instruction Manual				
9	580.57732		Decal				
10	580.57746		Decal				
11	580.57747		Decal				
12	580.57748		Decal				
13	580.57767		Decal Refueling Danger				
14	580.57768		Sticker Warning For Temp.				
15	580.57770		Decal Clutch				
16	580.57771		Decal				
17	580.57772		Decal To Stop & Start				
18	580.57773		Decal				
19	580.57774		Decal				
20	580.93089		Decal				

**620 MAX**

**DEACALS**

Serial Number Range  
**ALL**

**10.01**



ID	Part Number	Qty.	Description	ID	Part Number	Qty.	Description
1	530.48656		Decal				
2	530.93088		Decal				
3	580.57631		Decal				
4	580.57680		Decal				
5	580.59211		Decal				